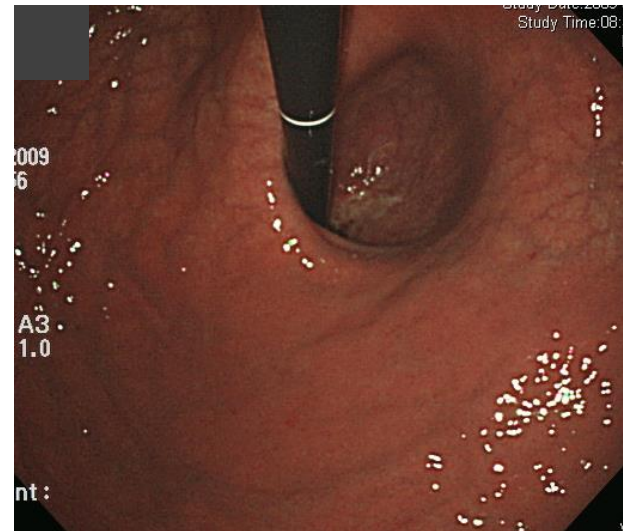
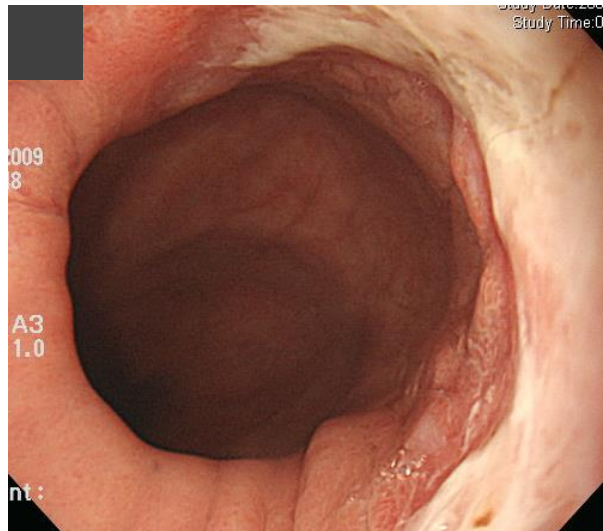
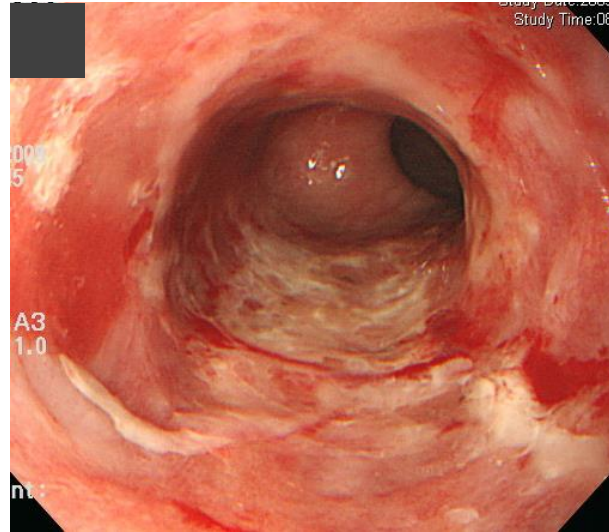
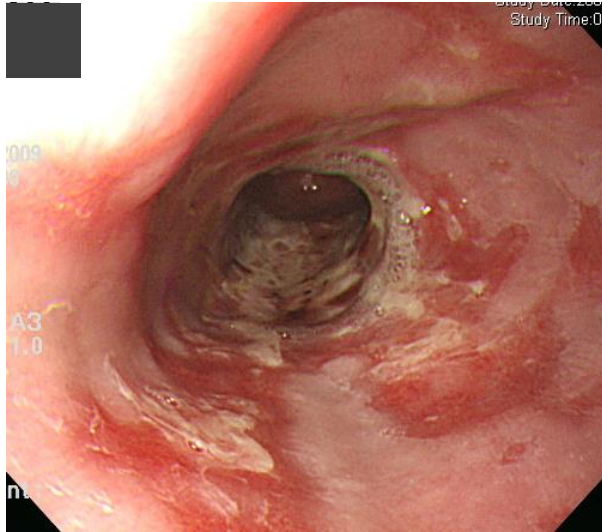


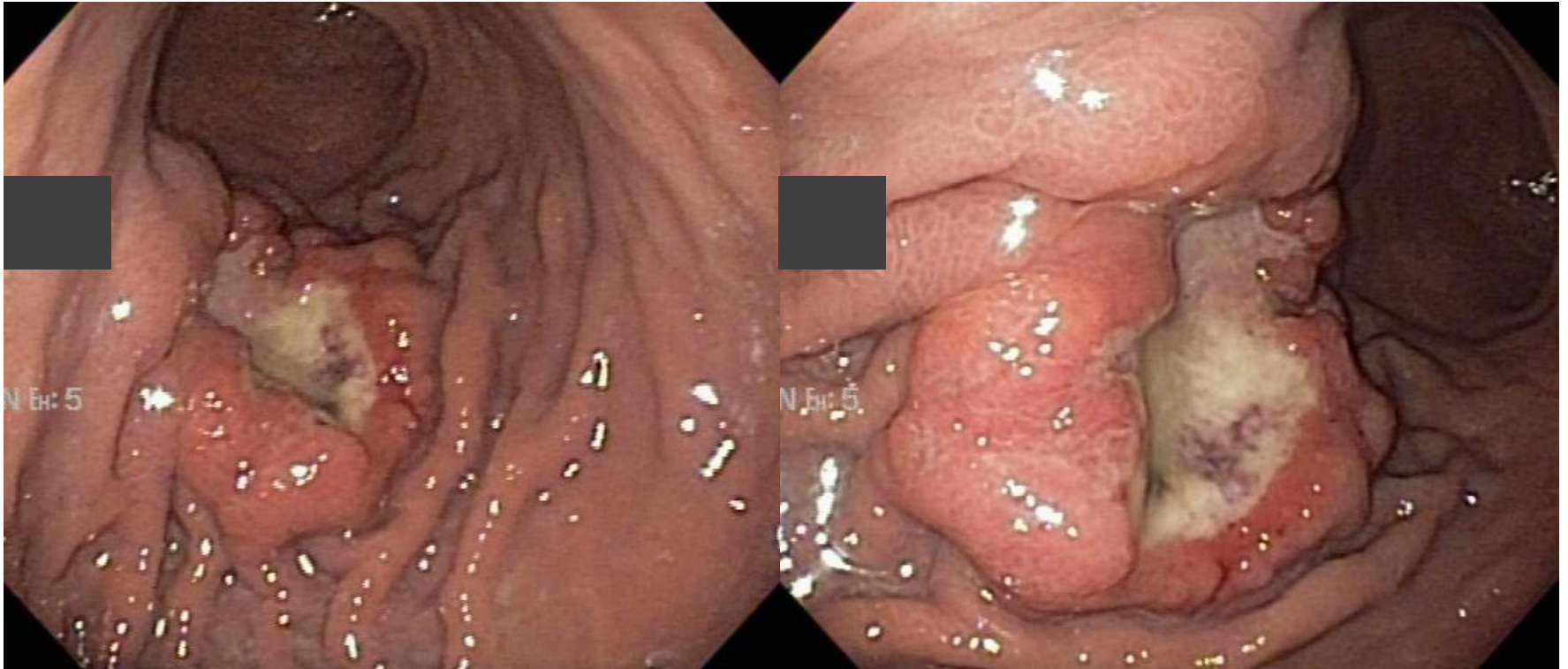
# SMC 내시경 퀴즈 29회

성균관대학교 의과대학 내과 이준행

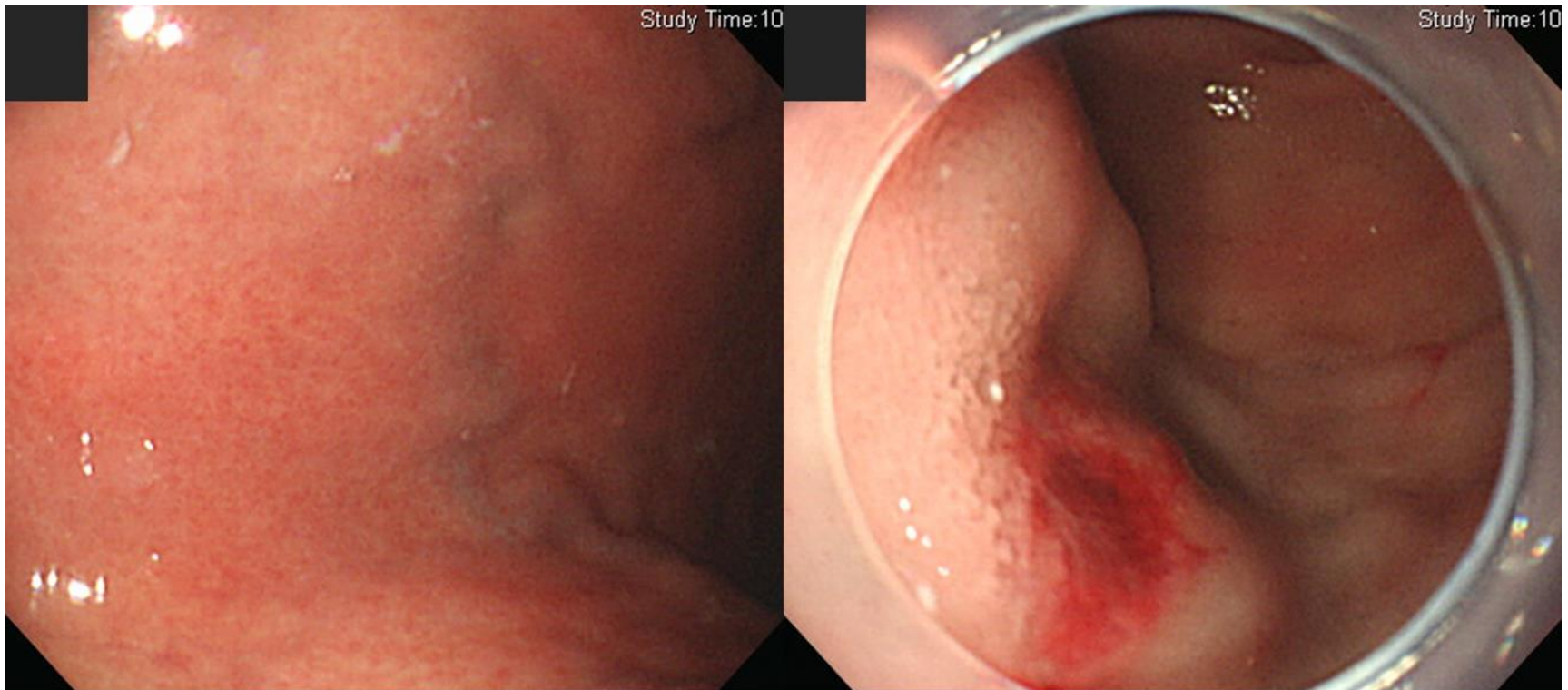
# Q29-1. 소견과 진단은?



Q29-2. 젊은 환자 위암입니다. 심달도는는?

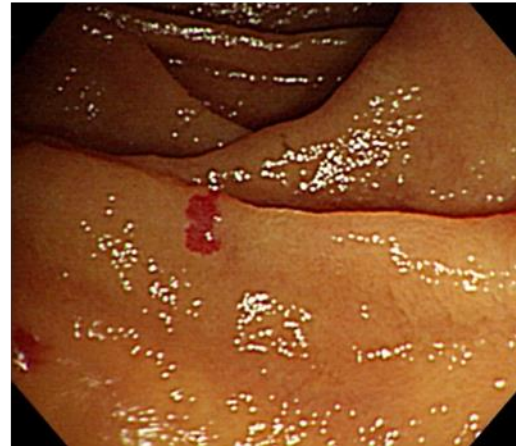
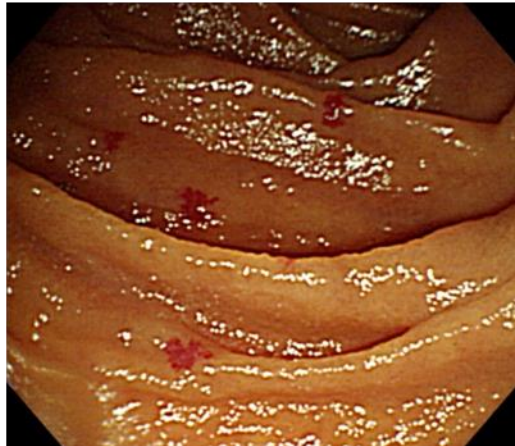
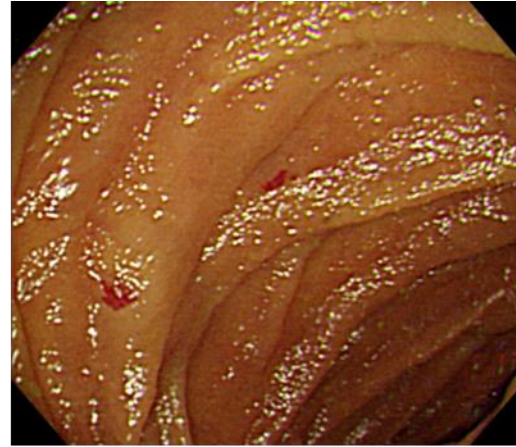
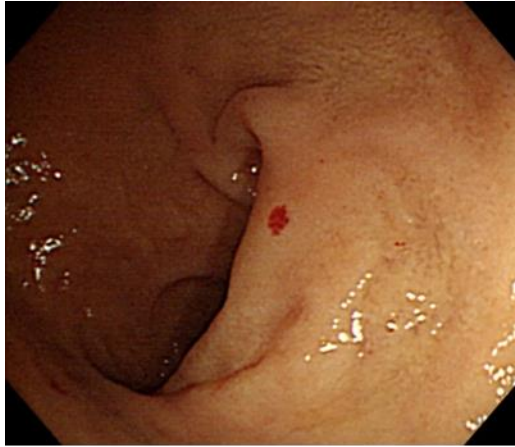


# Q29-3. 십이지장입니다. 소견과 진단은?

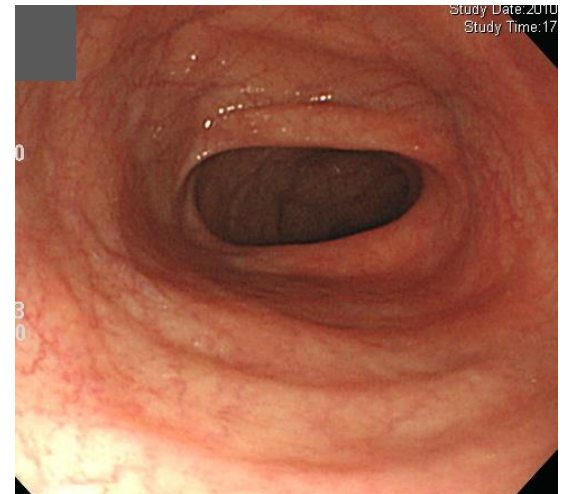
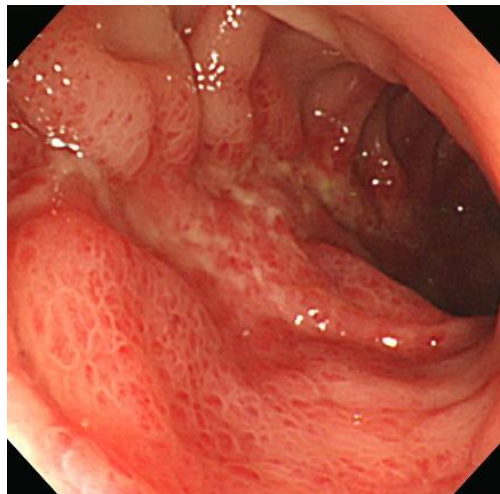
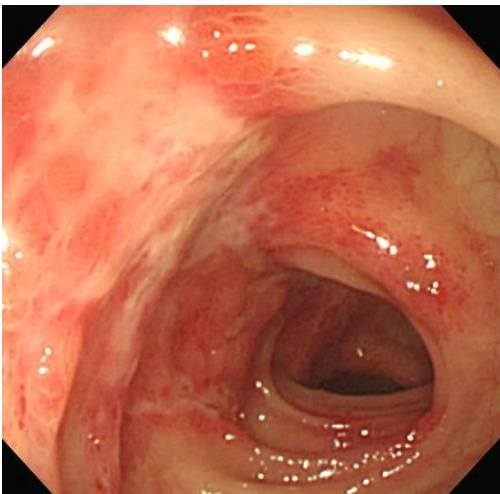
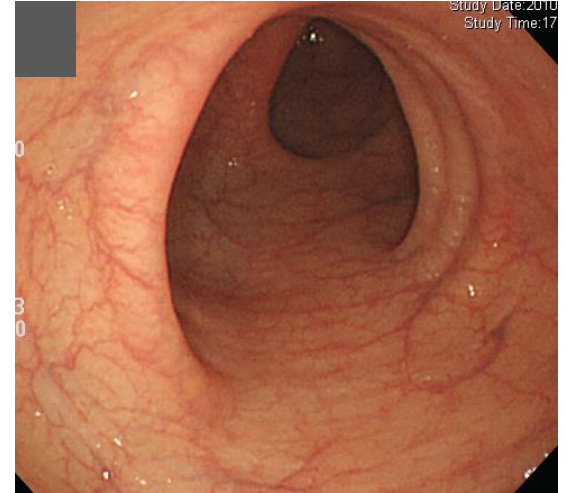
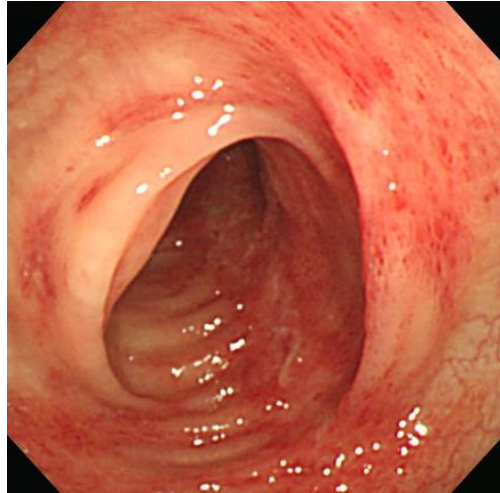
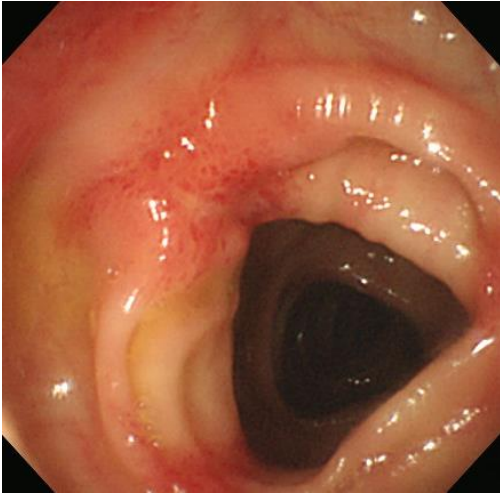


Bleeding after the biopsy


# Q29-4. 십이지장입니다. 소견과 진단은?



# Q29-5. Diarrhea. S/P living related liver transplantation



Follow-up endoscopy



Acting 선생님은 PDF로 되어있는 문제를 모두에게 전달해 주세요.  
각자 소견과 진단(first impression 하나만)을 A4 용지에 작성하여  
다음 주 월요일 오후까지 acting 선생님께 전달해 주세요.  
Acting 선생님은 목요일 집담회때 발표해 주세요.