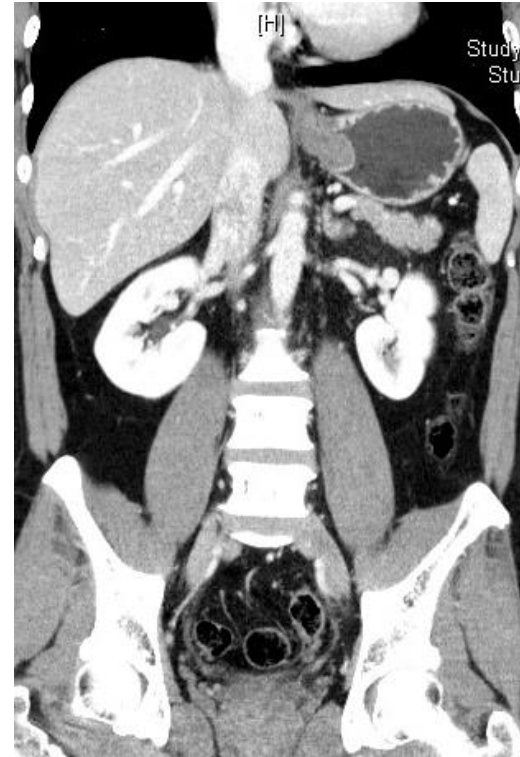
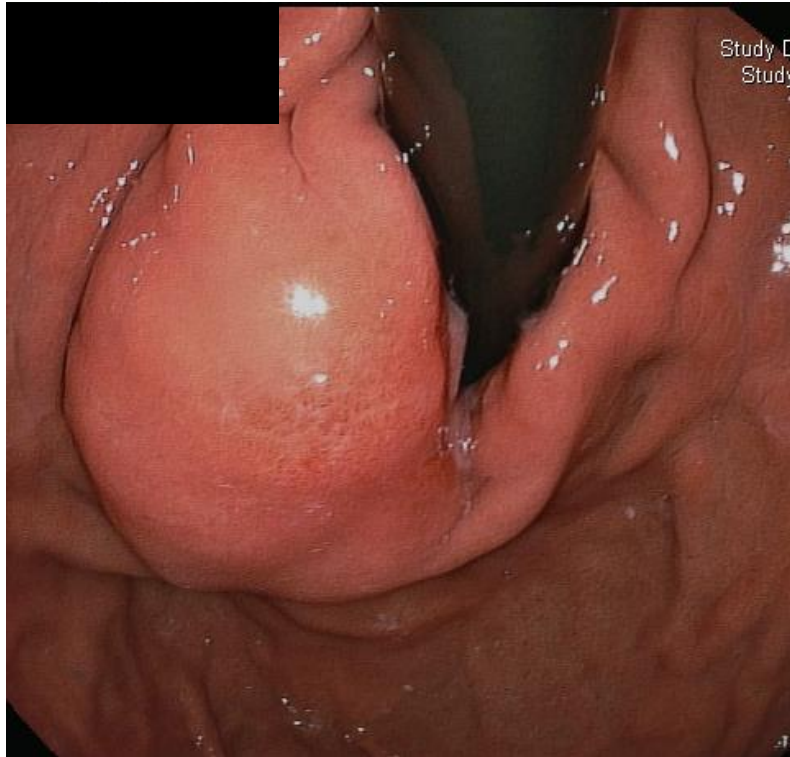


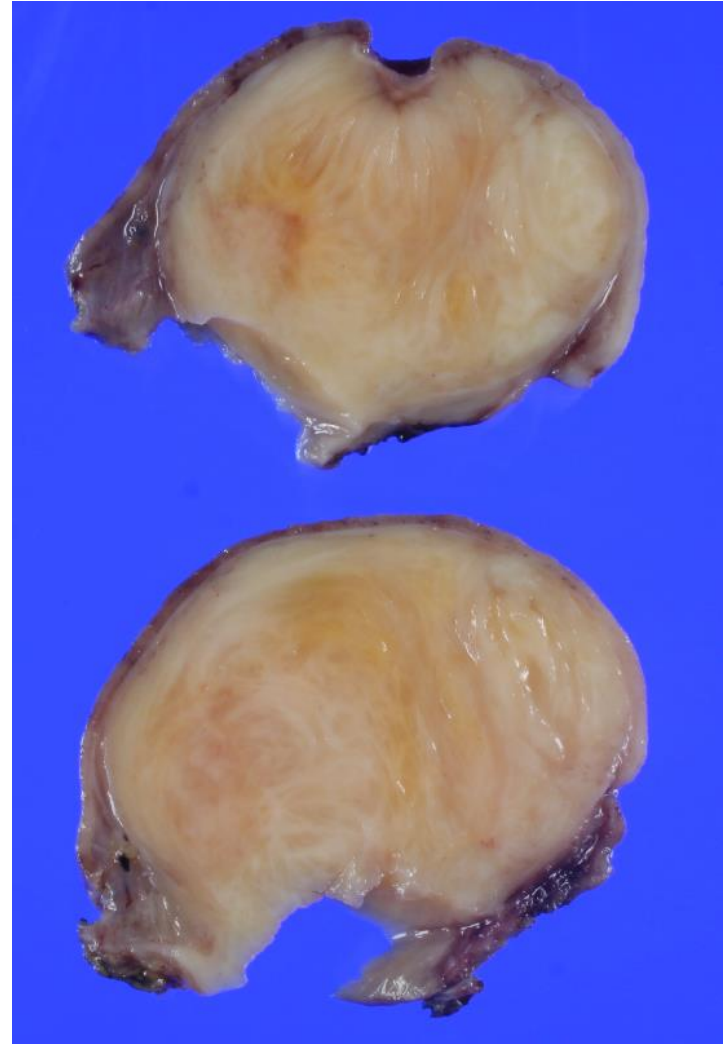
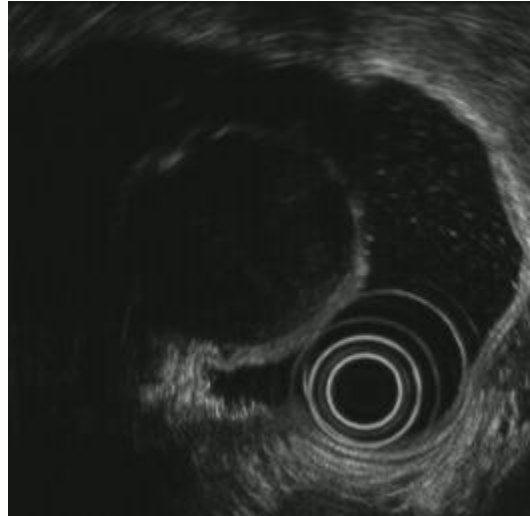
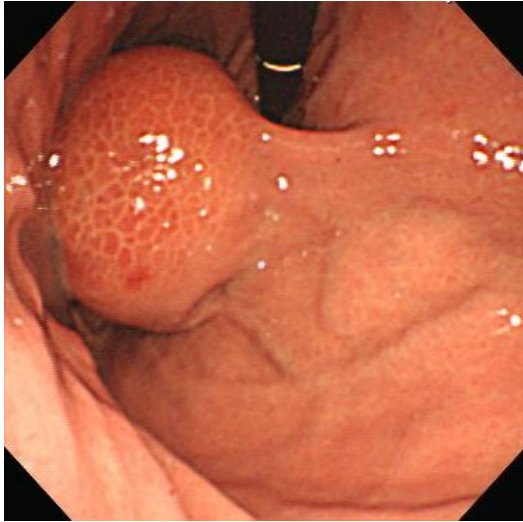
SMC 내시경 퀴즈 44회

성균관대학교 의과대학 내과 이준행

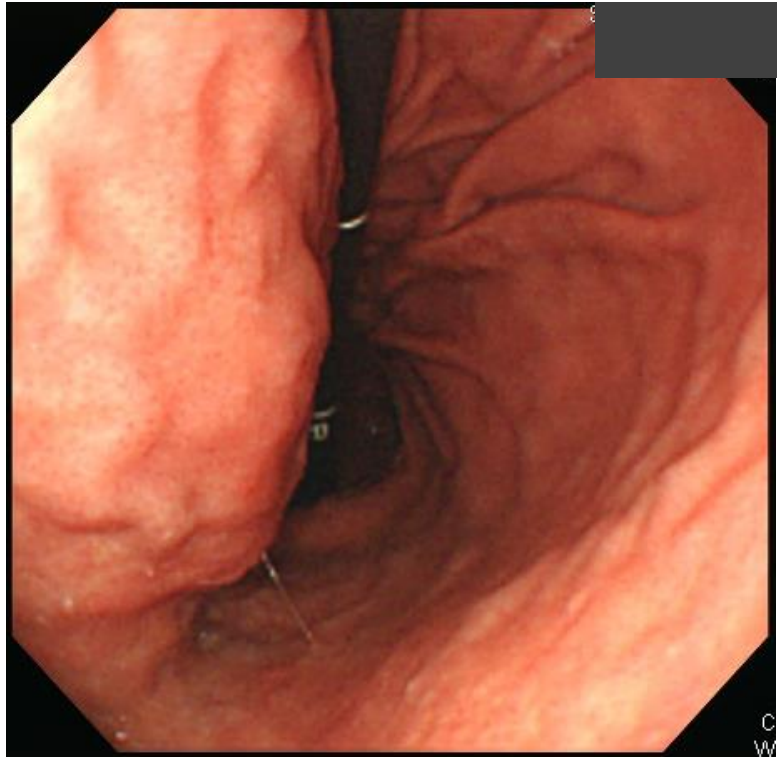
Q44-1. 소견과 진단은?



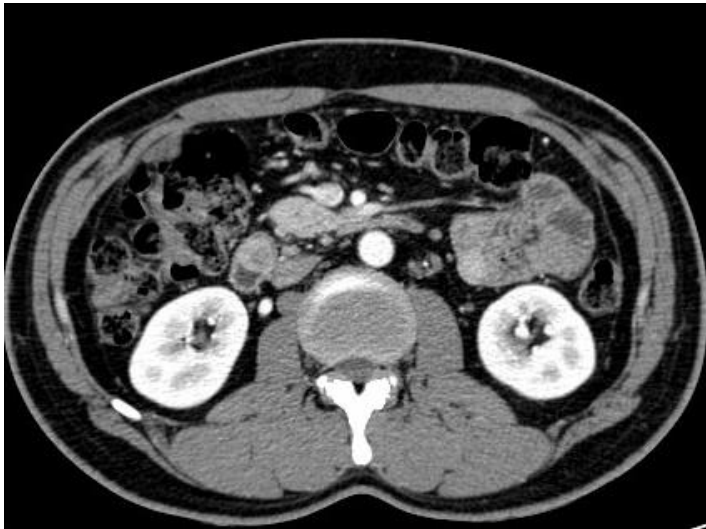
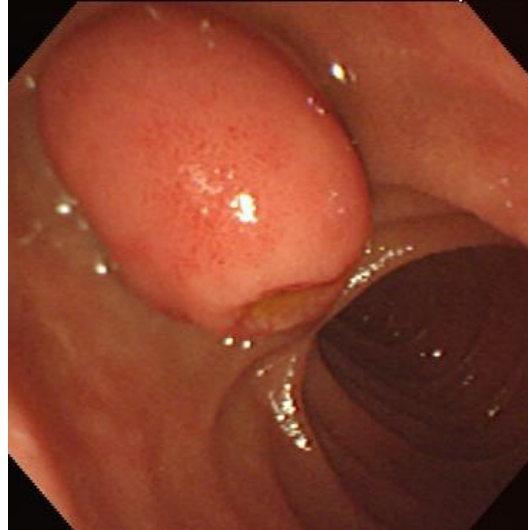
Q44-2. 소견과 진단은?



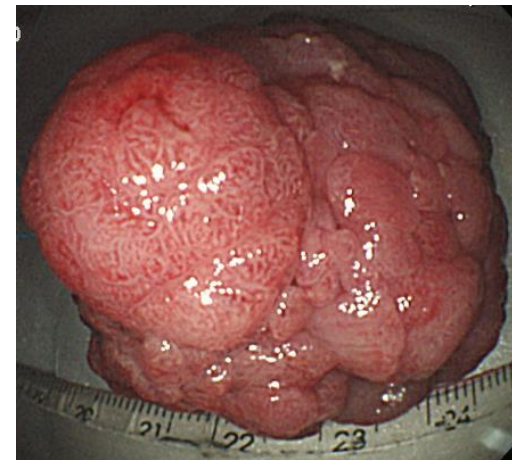
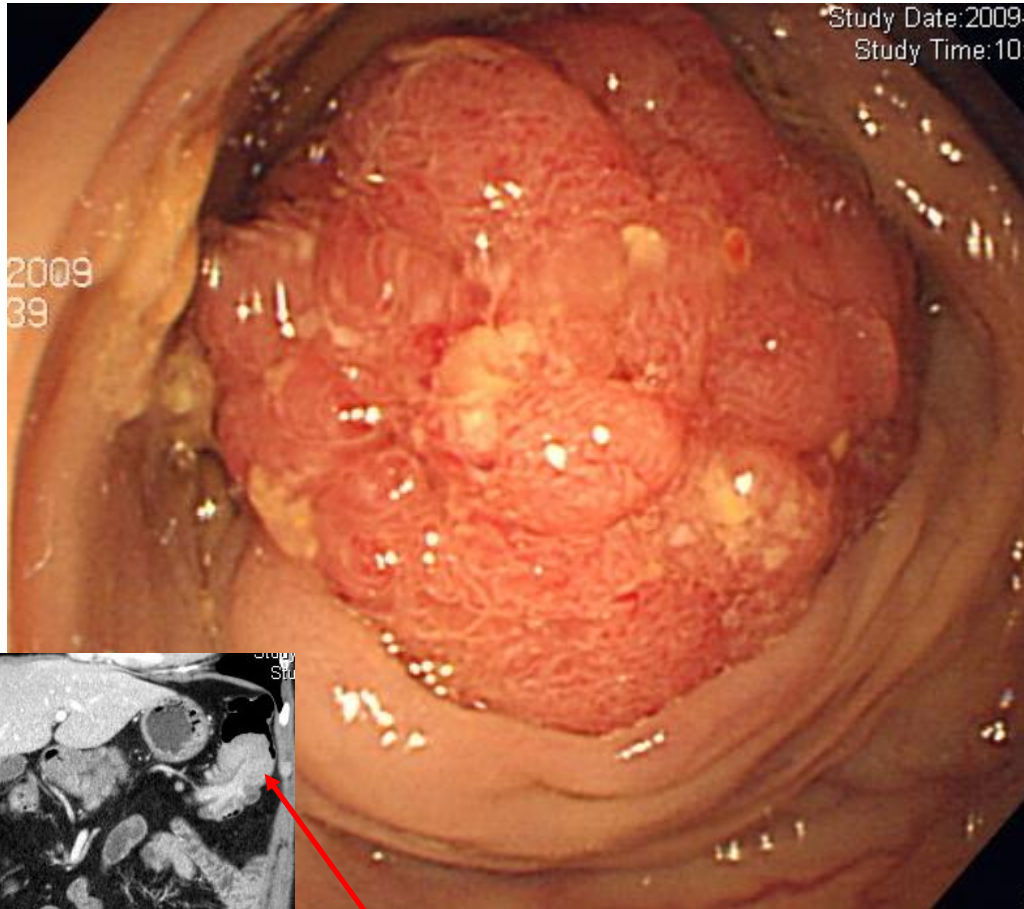
Q44-3. 소견과 진단은?




Q44-4. 소견과 진단은?



Q44-5. 소견과 진단은?



증례제공: 김진용 교수님



Acting 선생님은 PDF로 되어있는 문제를 모두에게 전달해 주세요.
각자 소견과 진단(first impression 하나만)을 A4 용지에 작성하여
다음 주 월요일 오후까지 acting 선생님께 전달해 주세요.
Acting 선생님은 목요일 집담회때 발표해 주세요.