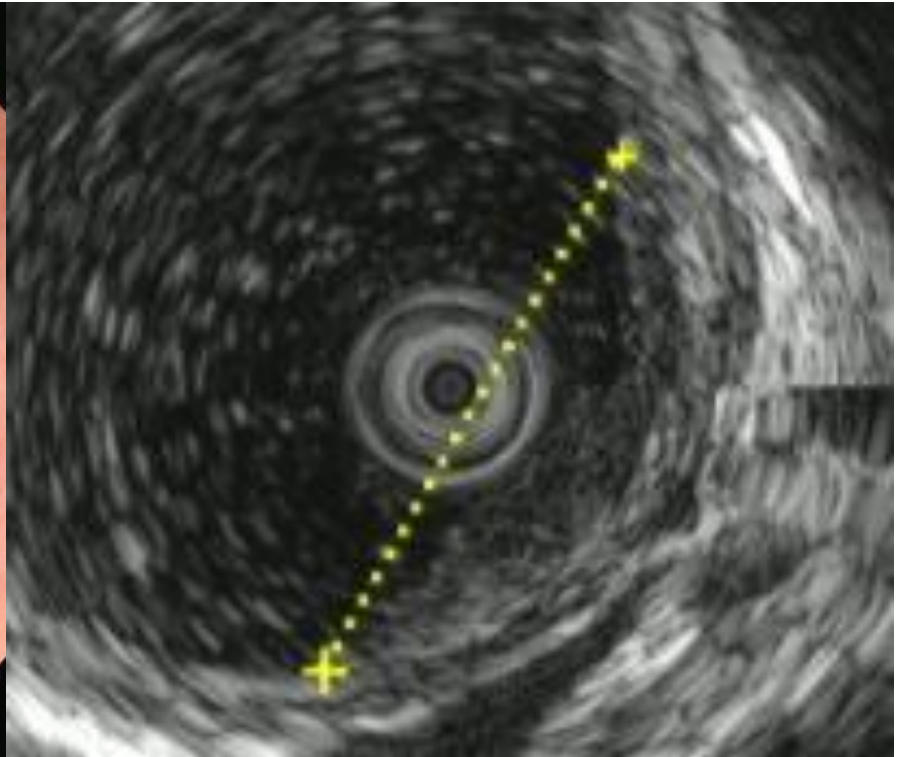


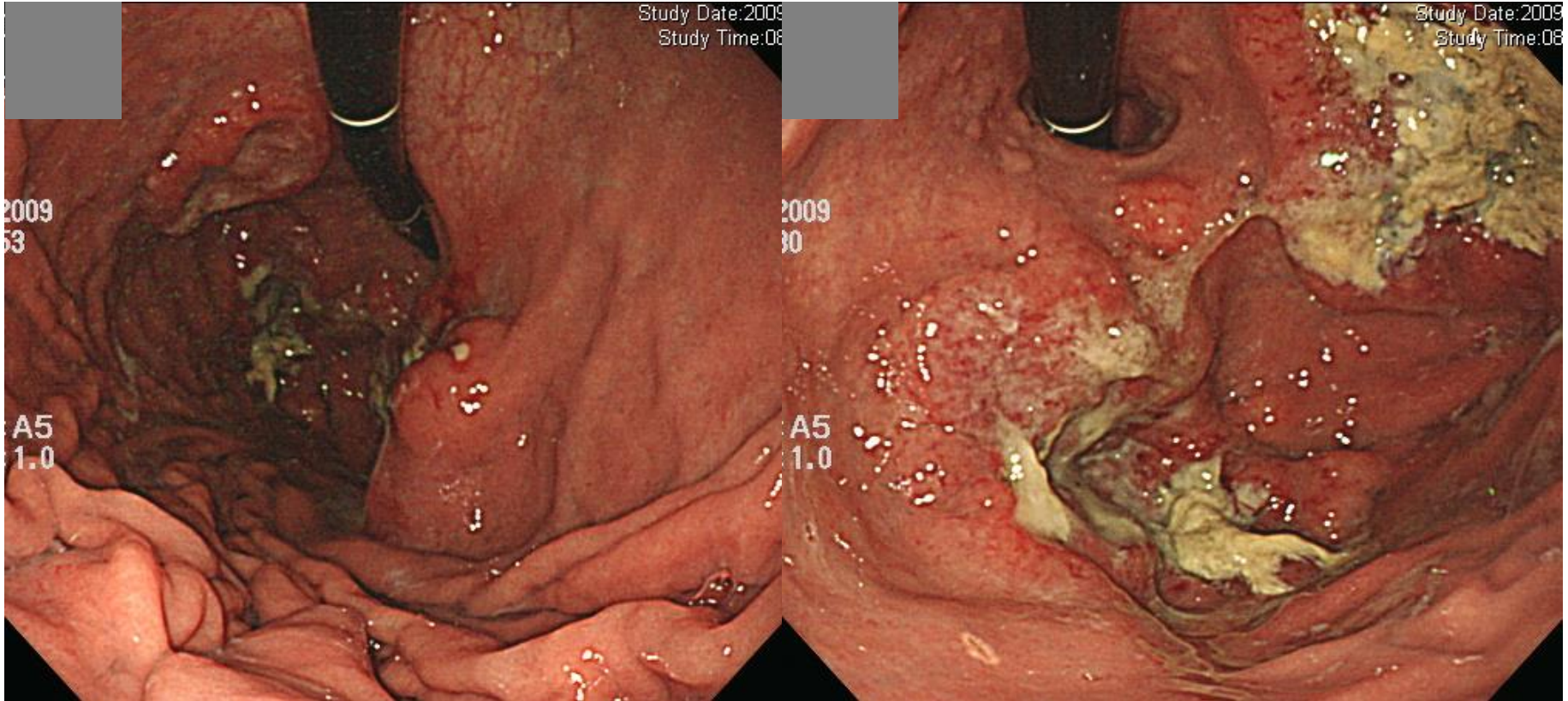
# SMC 내시경 퀴즈 46회

성균관대학교 의과대학 내과 이준행

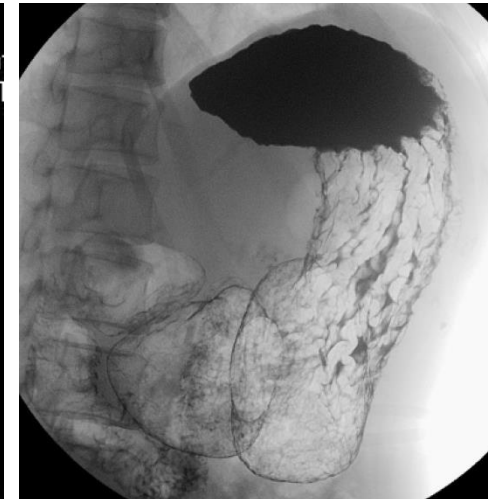
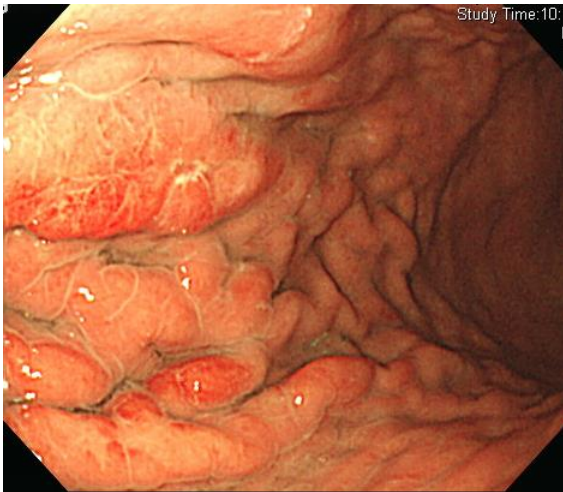
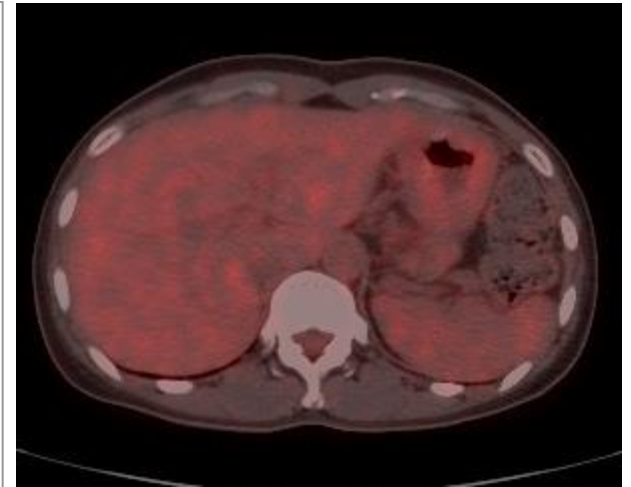
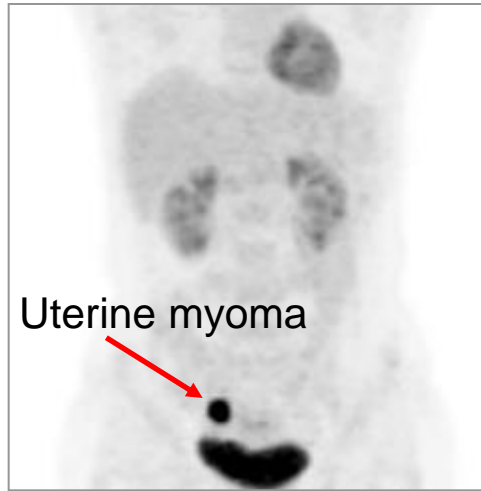
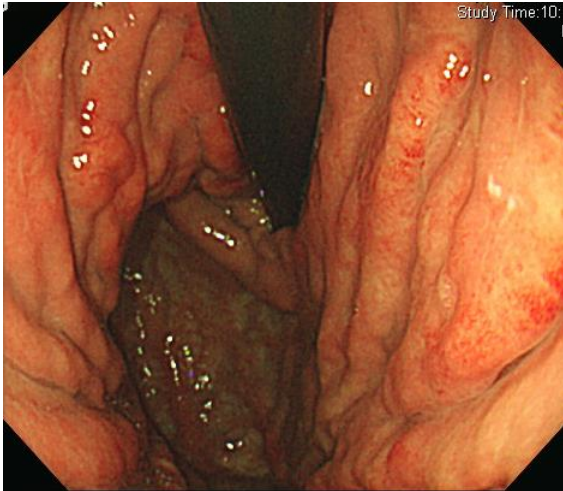
# Q46-1. 소견과 진단은?



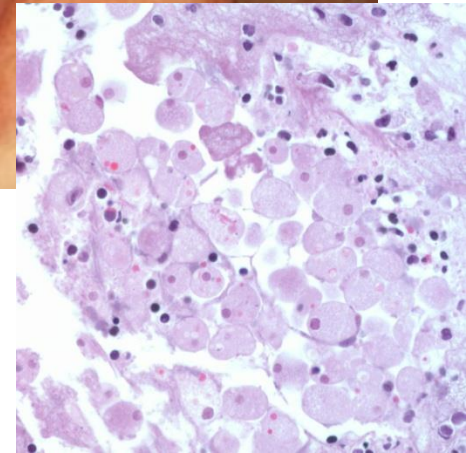
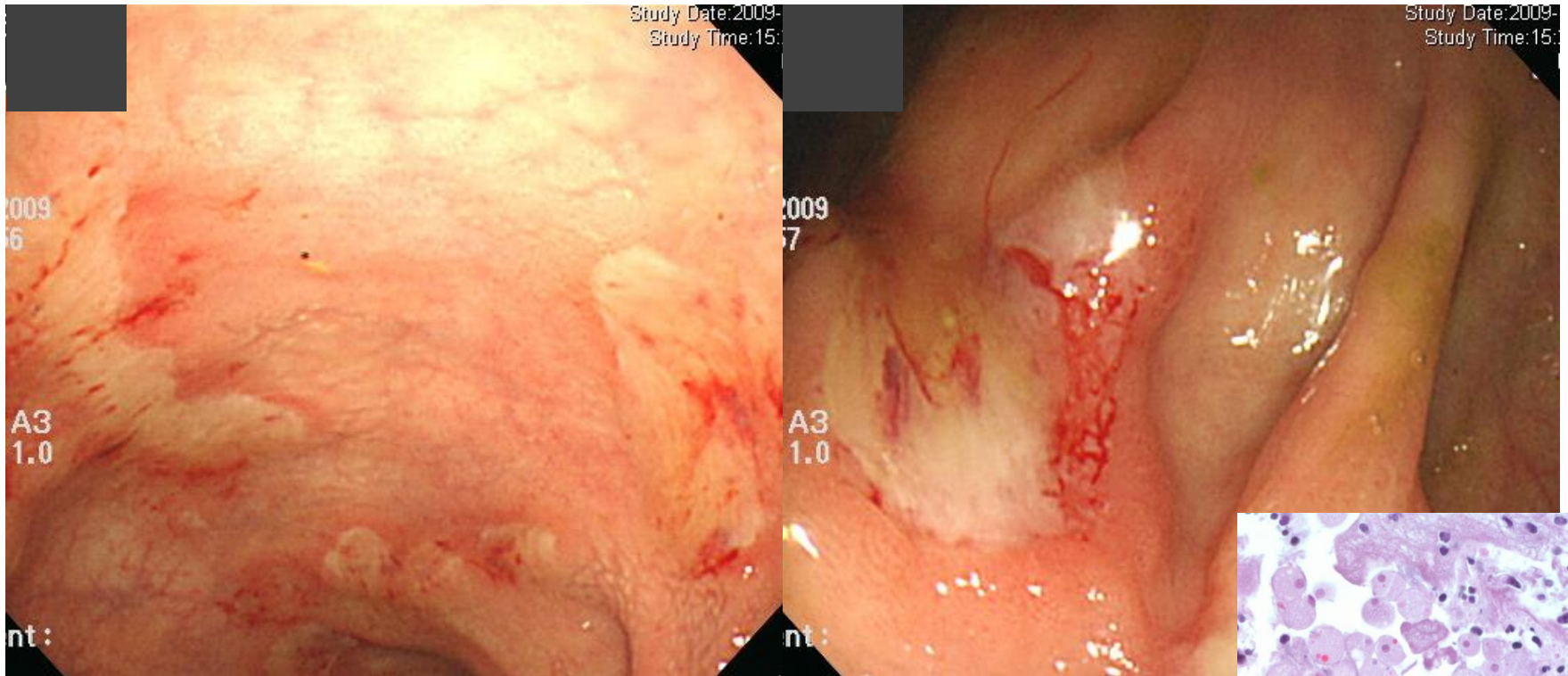
# Q46-2. 소견과 진단은?



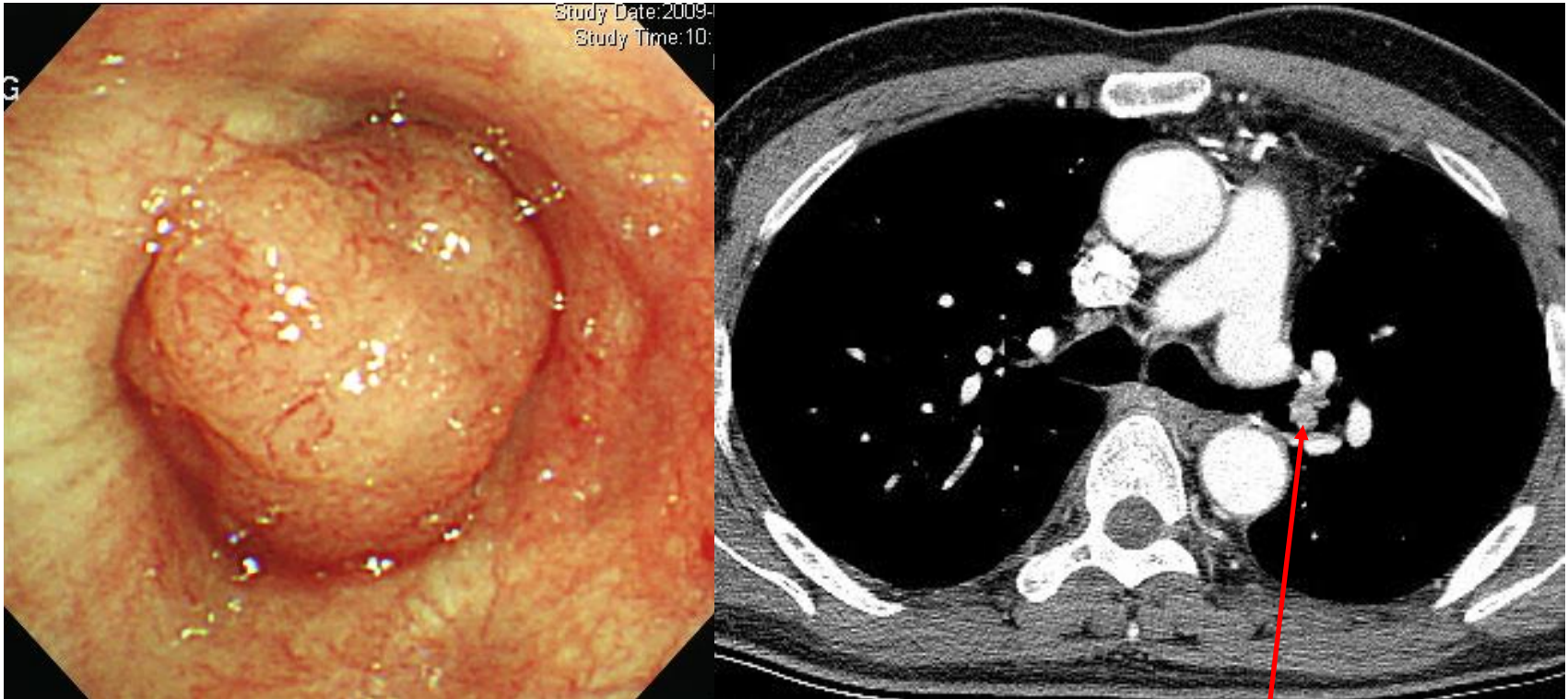
# Q46-3. 소견과 진단은?




# Q46-4. 대장입니다. 소견과 진단은?



# Q46-5. 대장암 환자입니다. 기관지경과 CT 입니다. 소견과 진단은?



Bronchoscopic findings



Acting 선생님은 PDF로 되어있는 문제를 모두에게 전달해 주세요.  
각자 소견과 진단(first impression 하나만)을 A4 용지에 작성하여  
다음 주 월요일 오후까지 acting 선생님께 전달해 주세요.  
Acting 선생님은 목요일 집담회때 발표해 주세요.