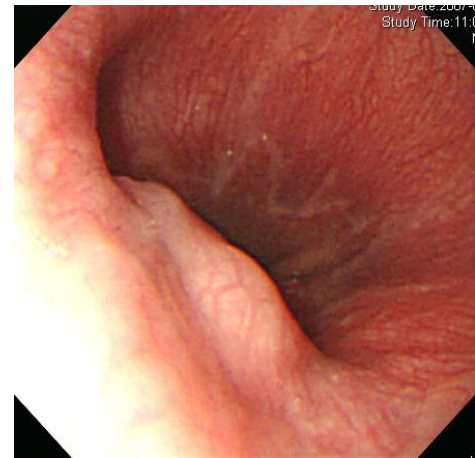
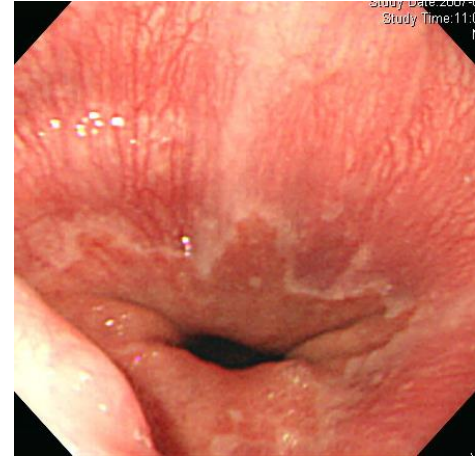
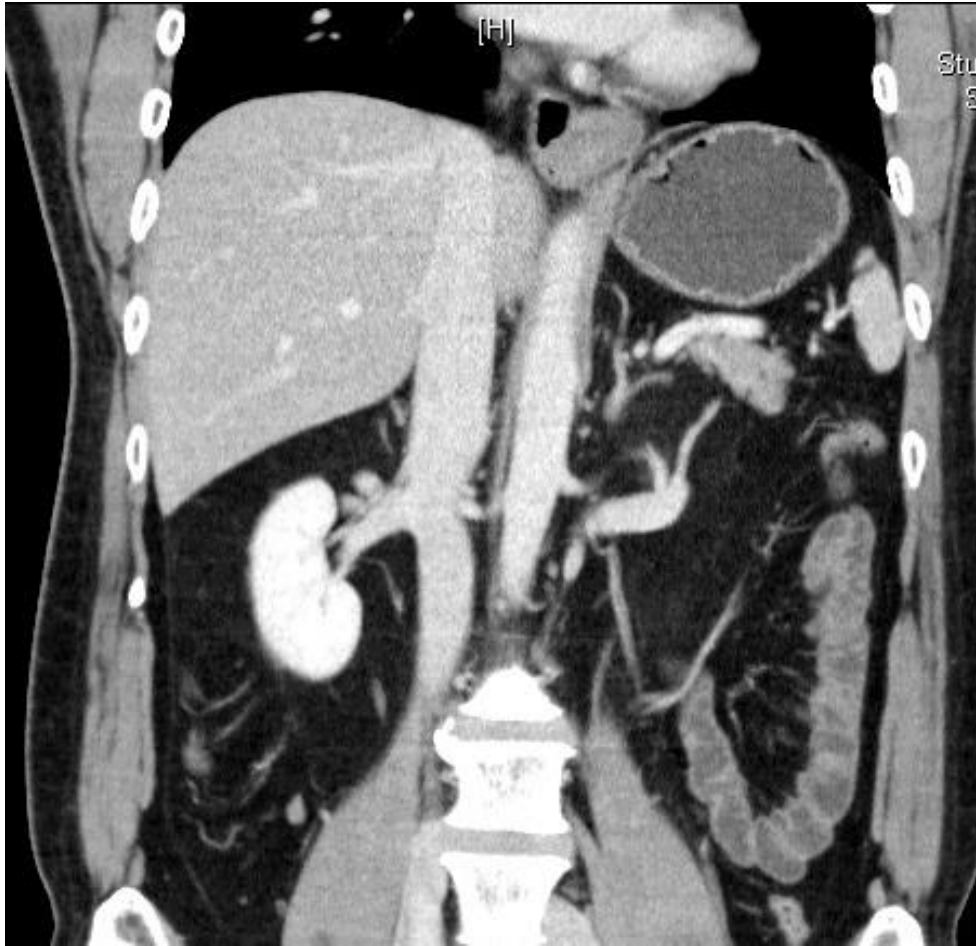


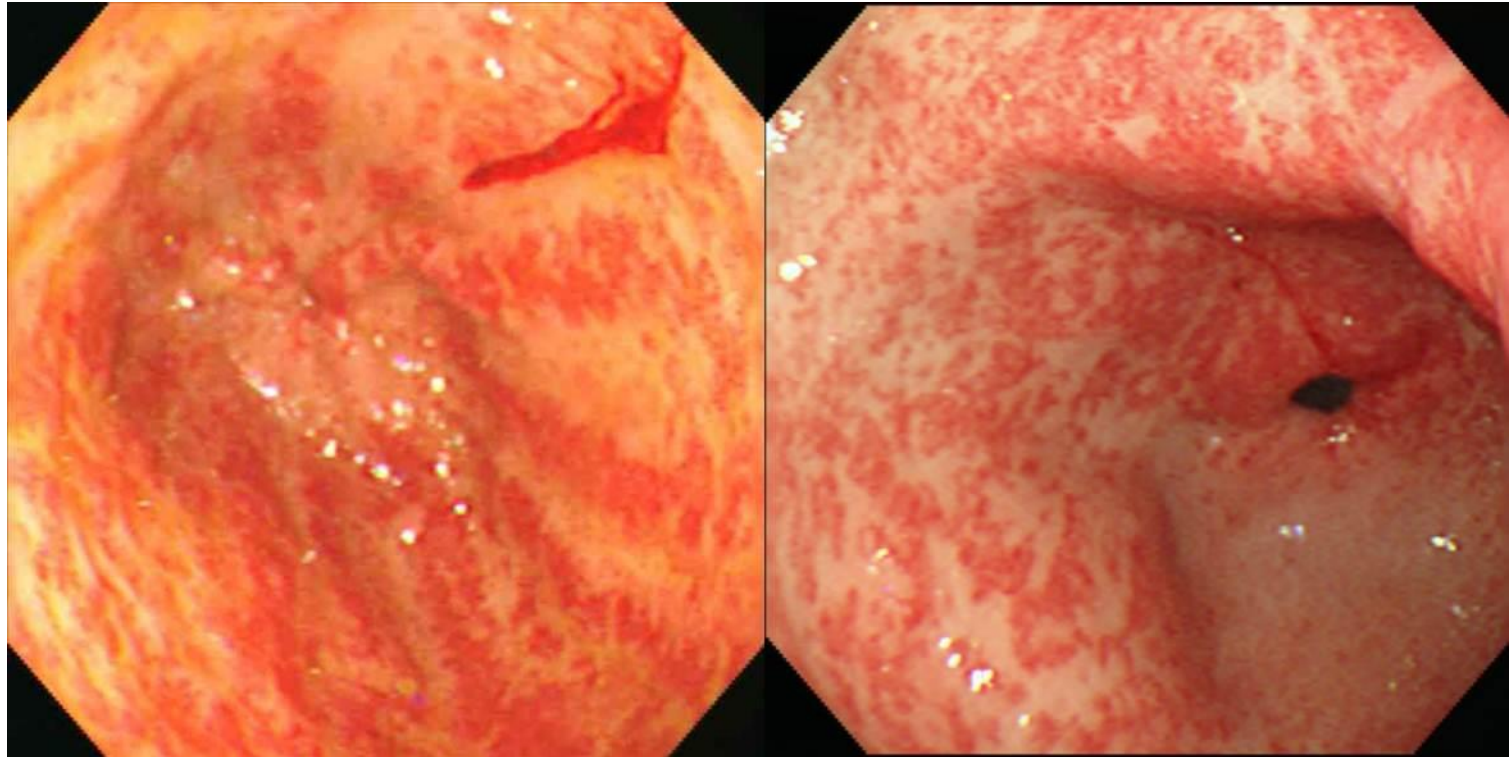
SMC 내시경 퀴즈 47회

성균관대학교 의과대학 내과 이준행

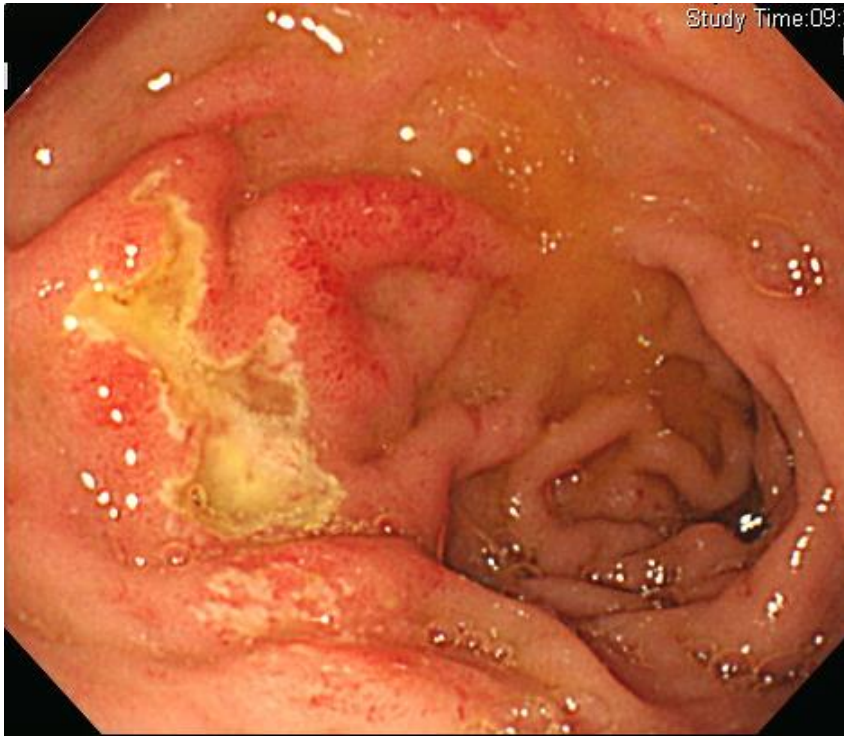
Q47-1. 소견과 진단은?



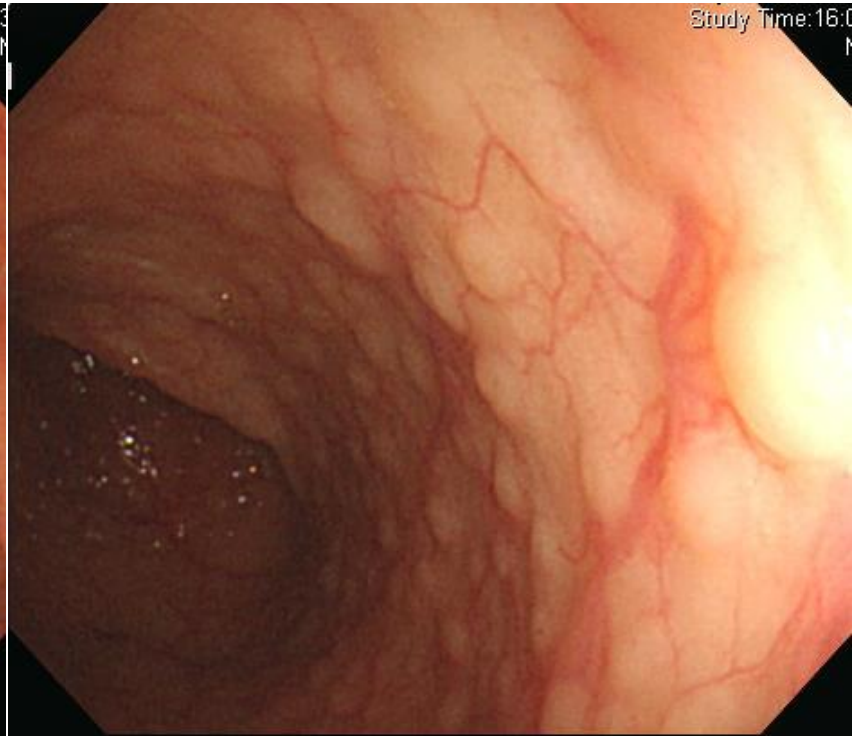
Q47-2. 소견과 진단은?



Q47-3. 림프종 환자입니다. 소견과 진단은?

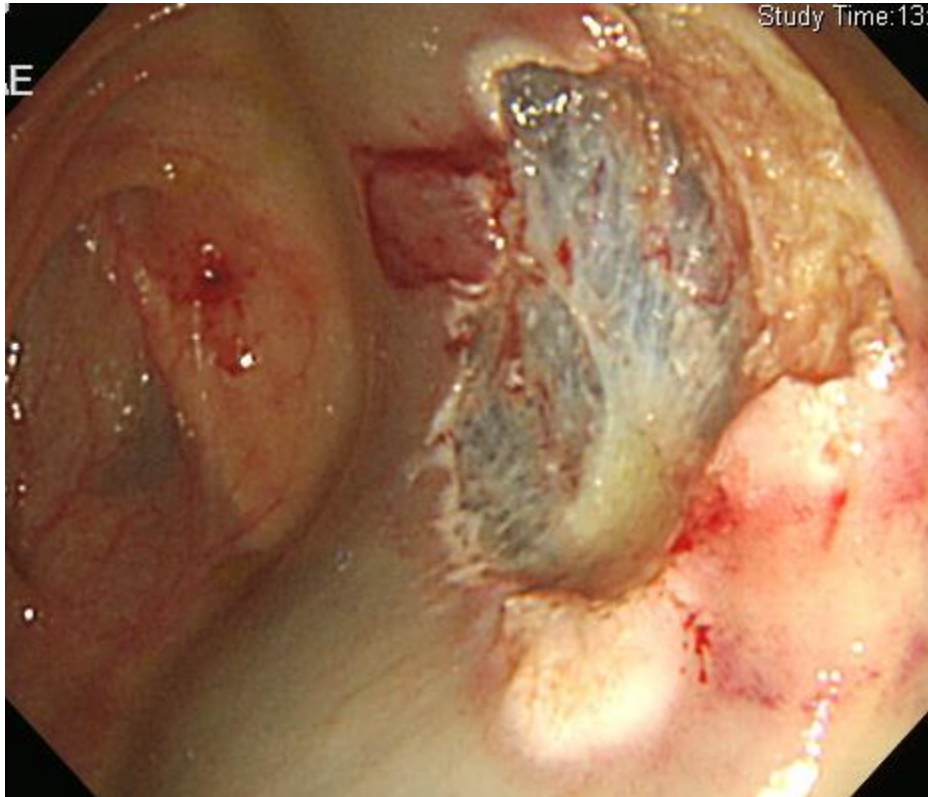


duodenum

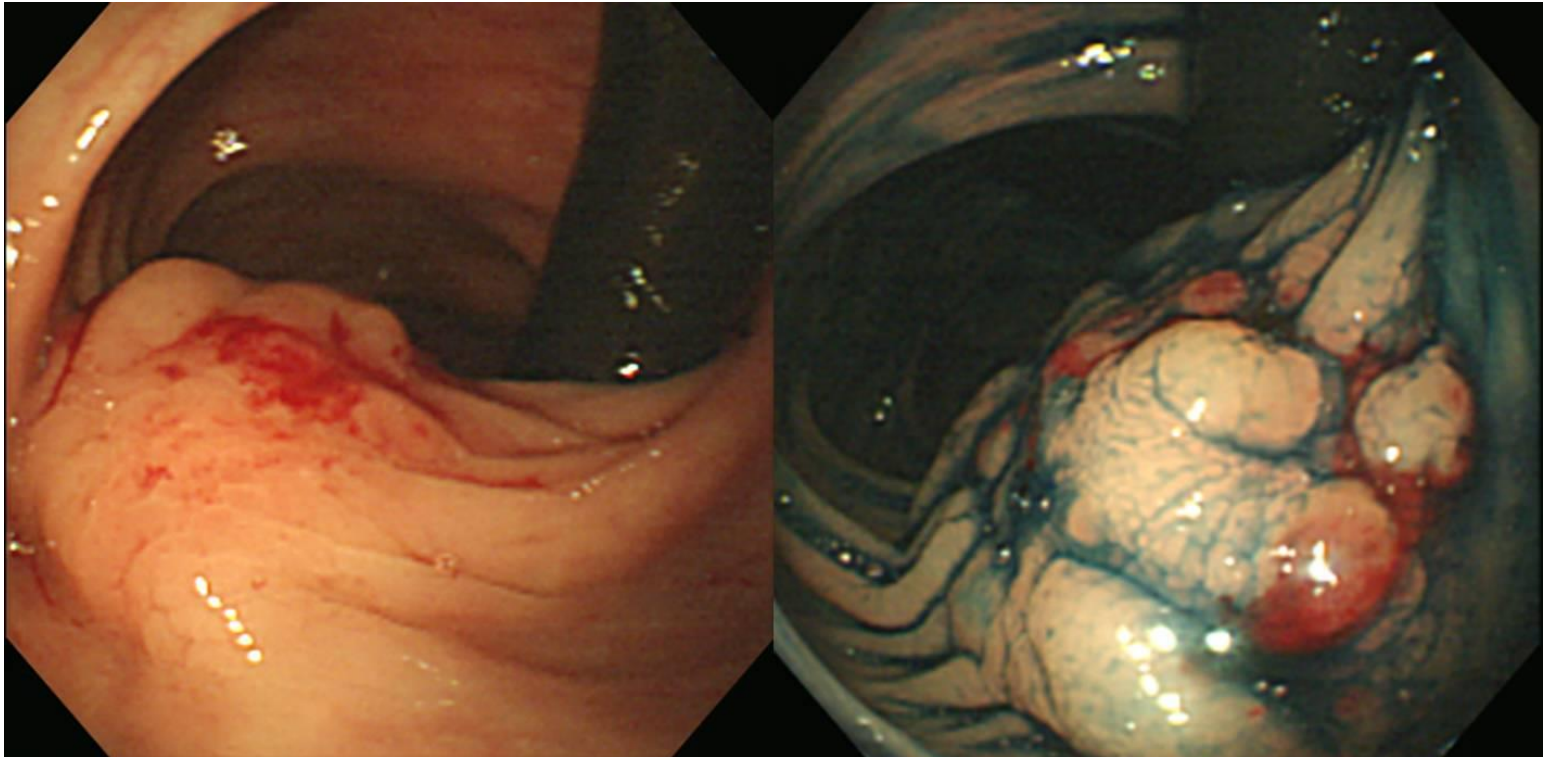



colon

Q47-4. 대장용종절제술 후 복통으로 CT. 진단은? 치료는?



Q47-5. 소견과 진단은?





Acting 선생님은 PDF로 되어있는 문제를 모두에게 전달해 주세요.
각자 소견과 진단(first impression 하나만)을 A4 용지에 작성하여
다음 주 월요일 오후까지 acting 선생님께 전달해 주세요.
Acting 선생님은 목요일 집담회때 발표해 주세요.