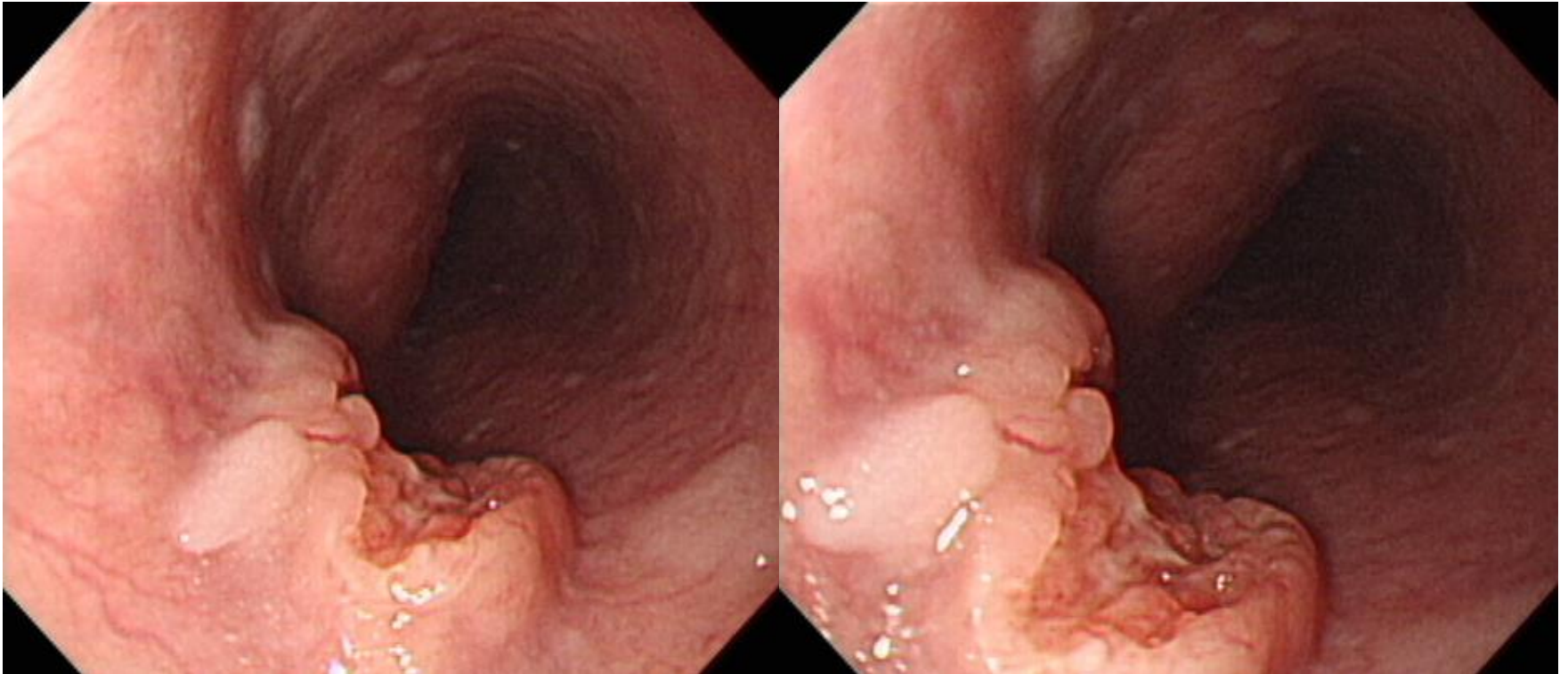


SMC 내시경 퀴즈 50회

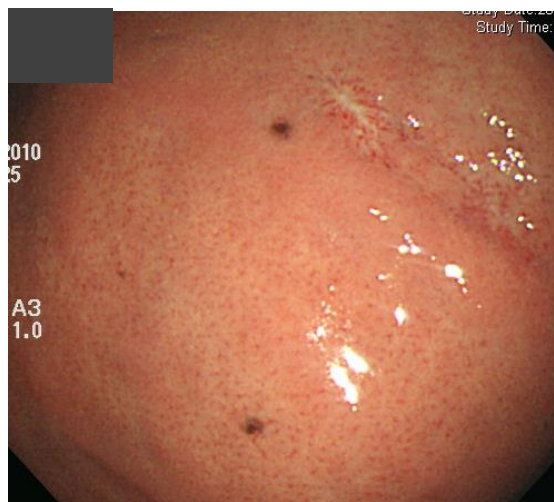
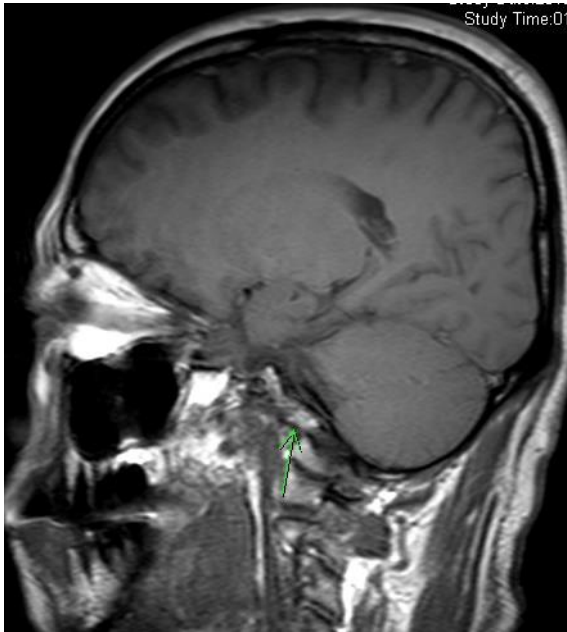
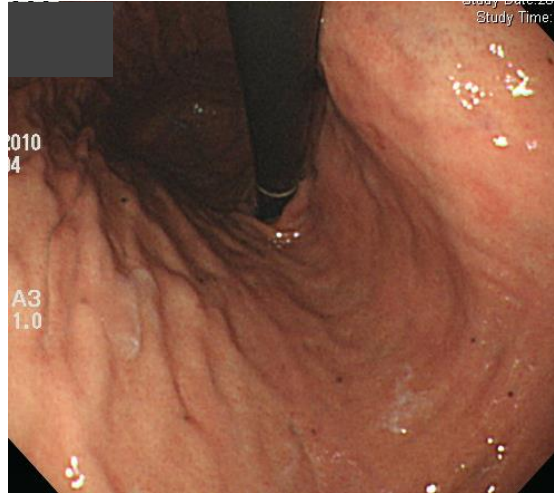
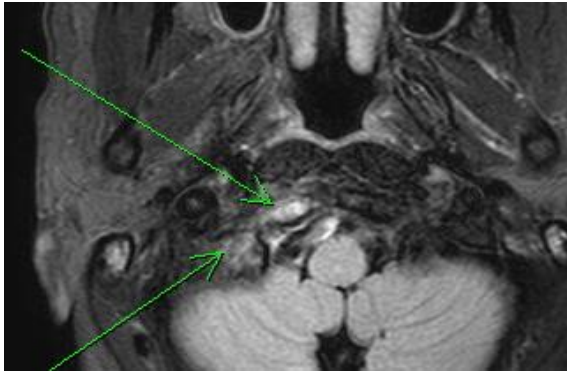
성균관대학교 의과대학 내과 이준행

Q50-1. 소견과 진단은? 심달도는는?

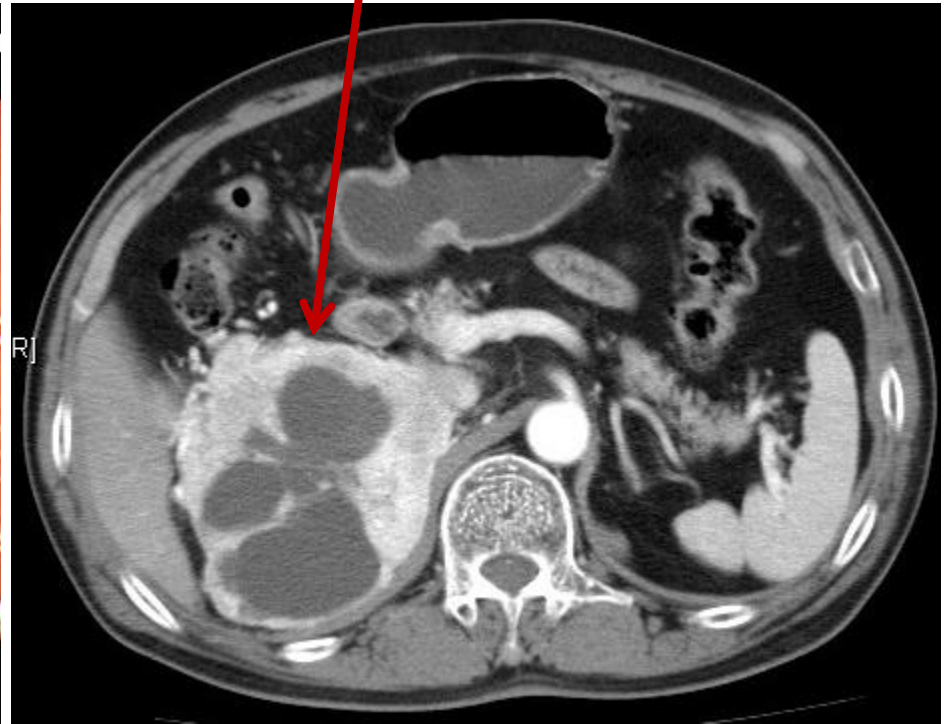


Q50-2. 소견과 진단은?

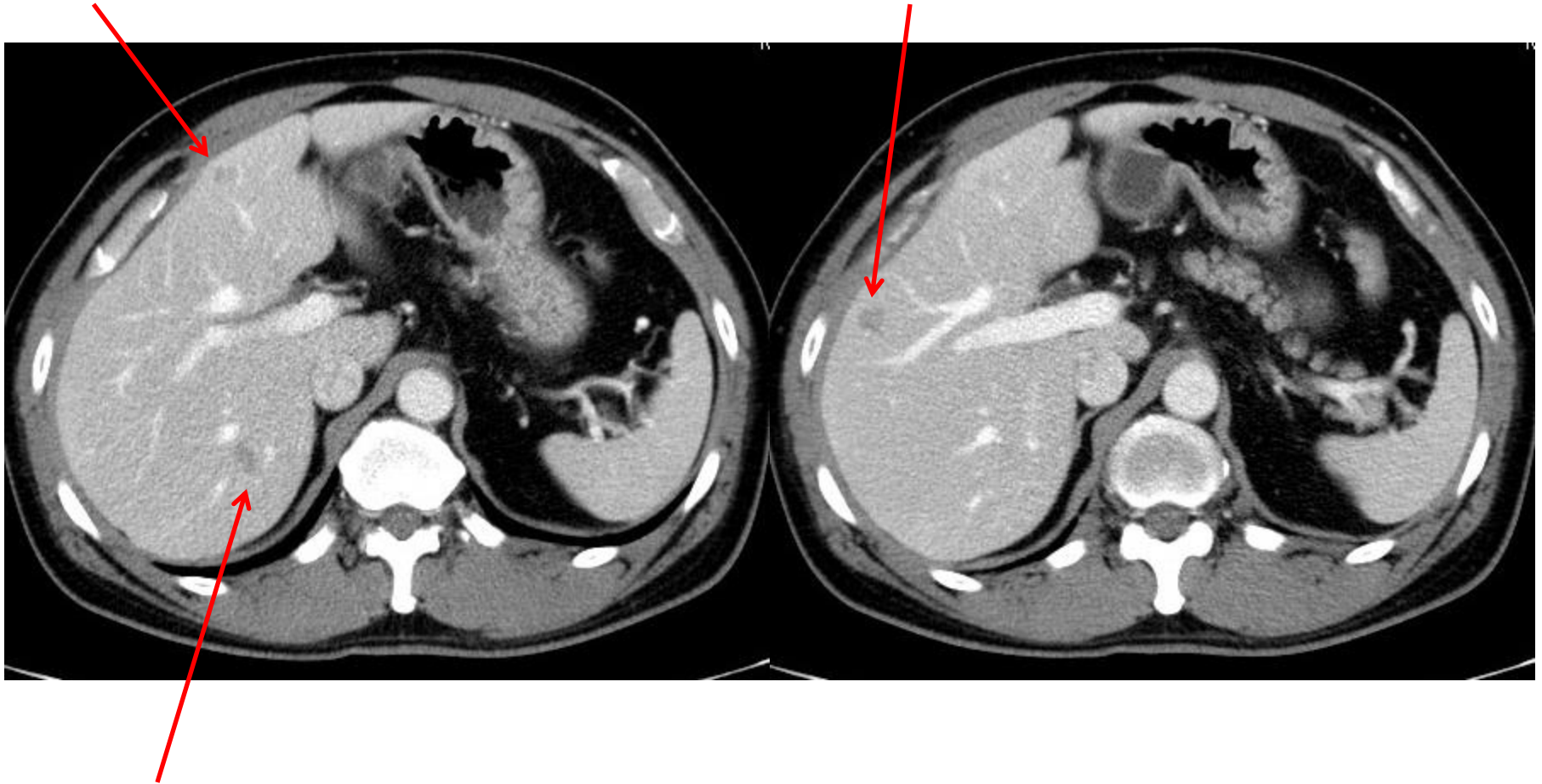
- 증상: blurred vision



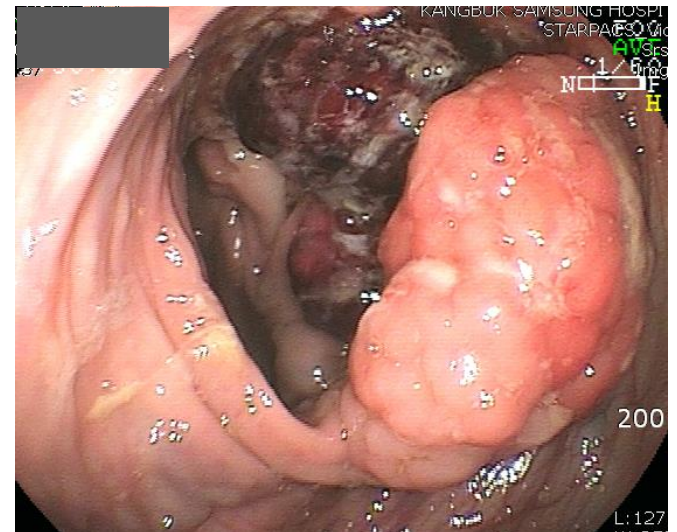
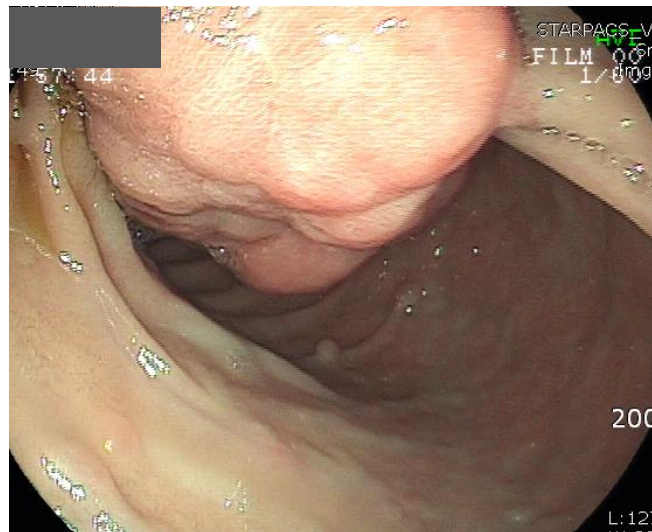
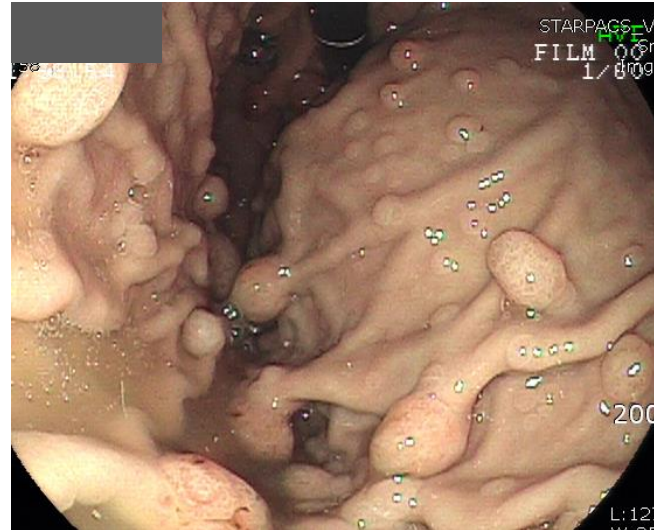
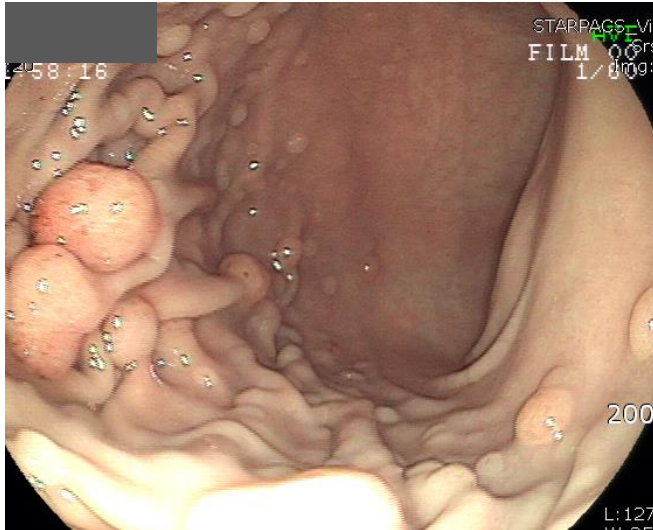
Q50-3. 조기위암 환자입니다. CT에서 보이는 소견과 진단은?




Q50-4. CT 에서 저음영 병소의 위치가 변합니다. 진단은?



Q56-5. 소견과 진단은?



자료제공: 성균관대학교 강북삼성병원 박정호



Acting 선생님은 PDF로 되어있는 문제를 모두에게 전달해 주세요.
각자 소견과 진단(first impression 하나만)을 A4 용지에 작성하여
다음 주 월요일 오후까지 acting 선생님께 전달해 주세요.
Acting 선생님은 목요일 집담회때 발표해 주세요.