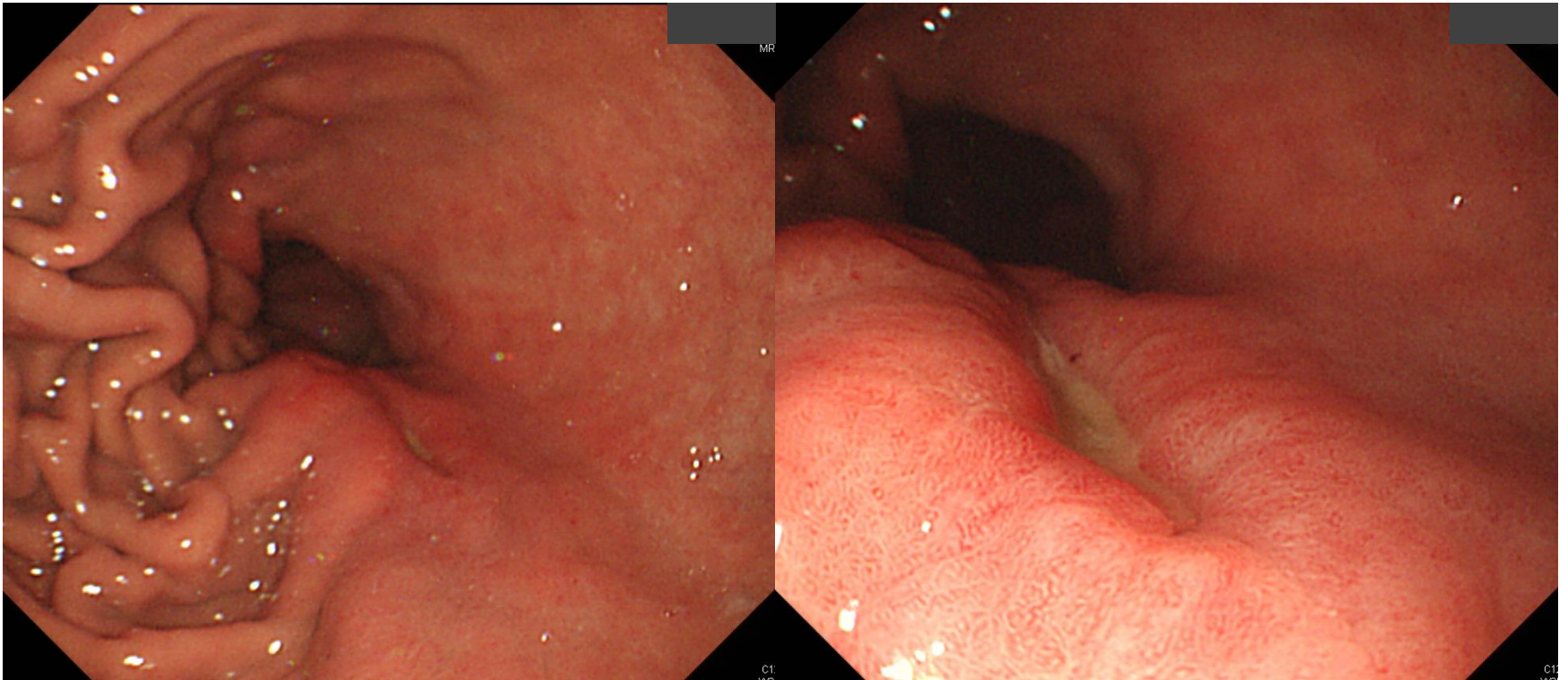


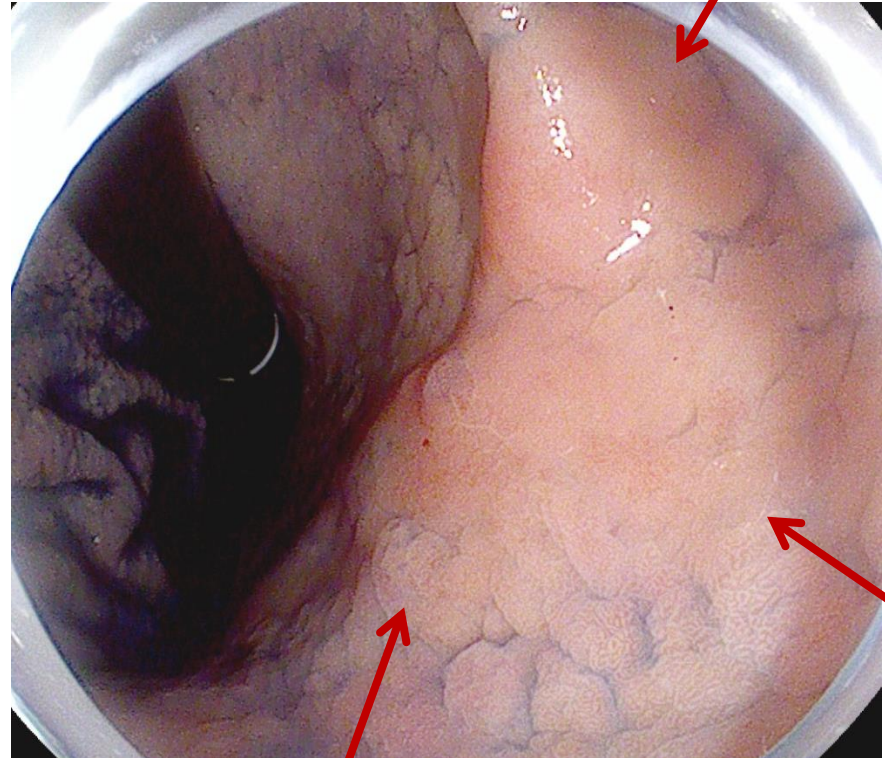
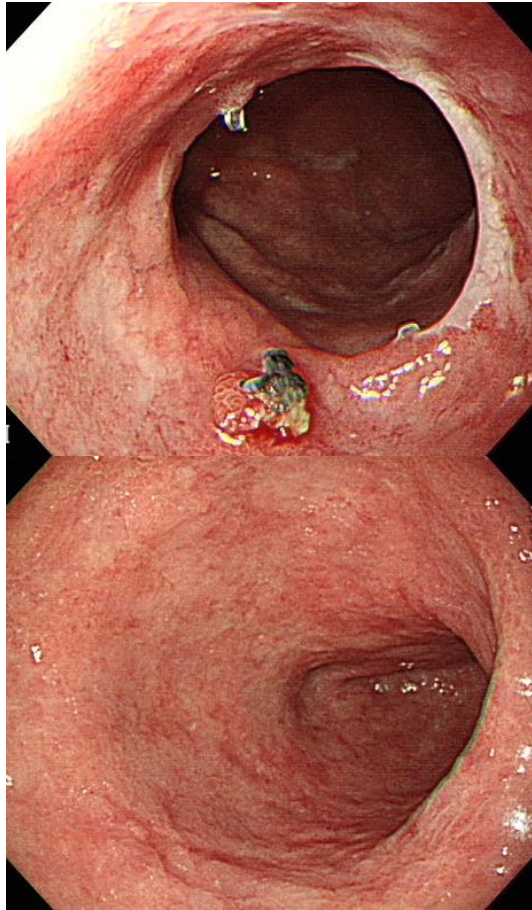
# SMC 내시경 퀴즈 63회

성균관대학교 의과대학 내과 이준행

Q63-1. 식도암 수술 환자의 gastric tube 하단부입니다. 소견과 진단은?

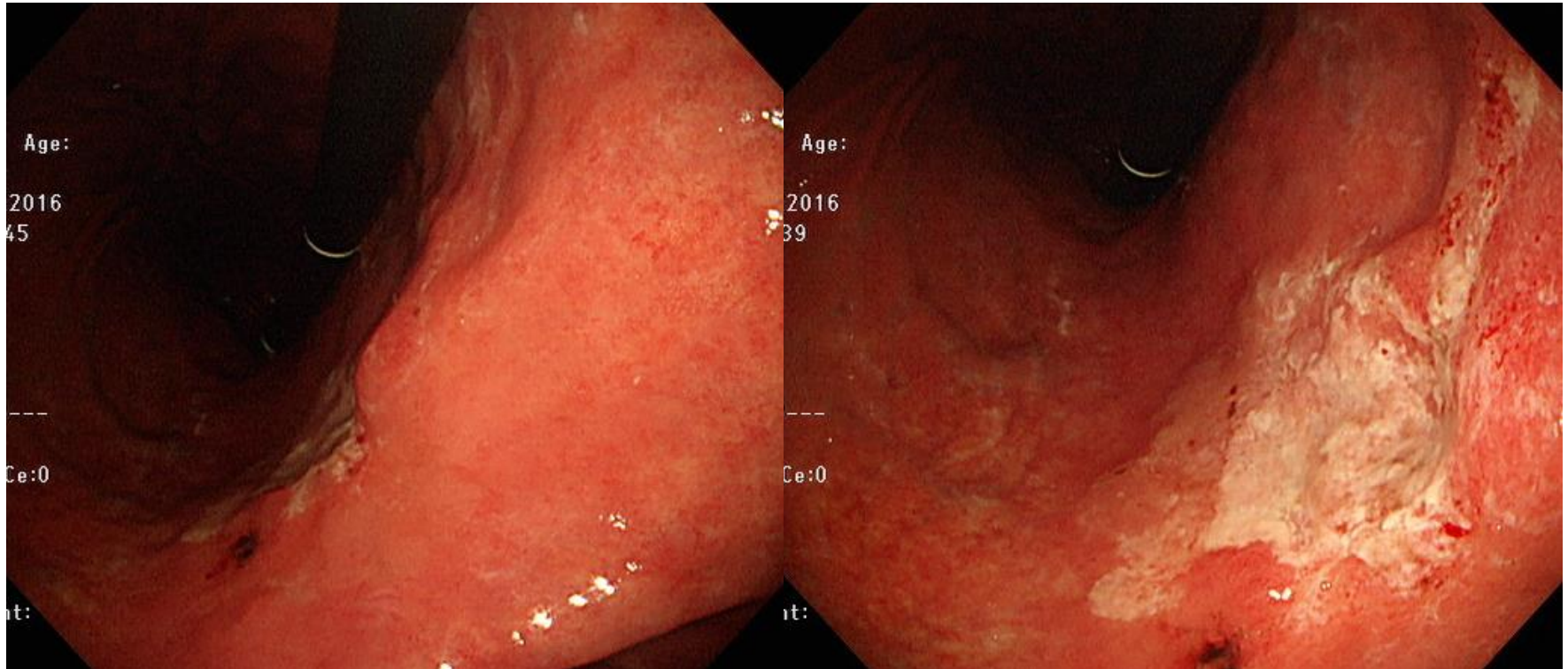


Q63-2. 조기위암 proximal gastrectomy 후 잔위의 점막 병소입니다. 진단은?



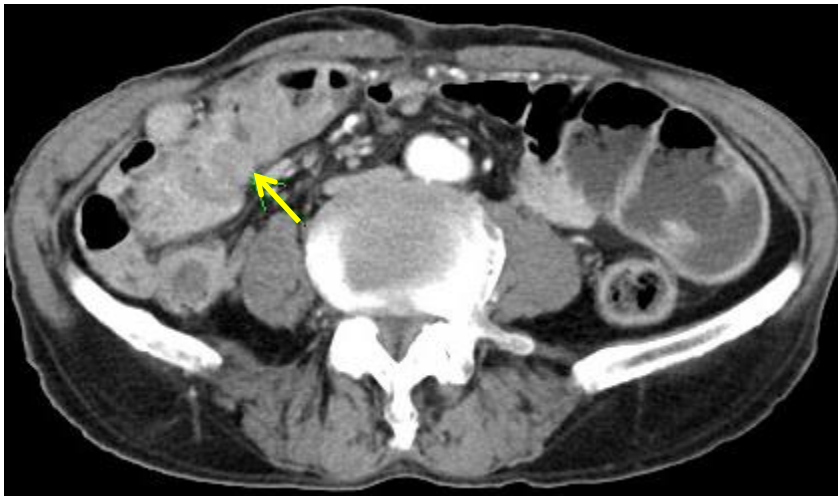


# Q63-3. 소견과 진단은?

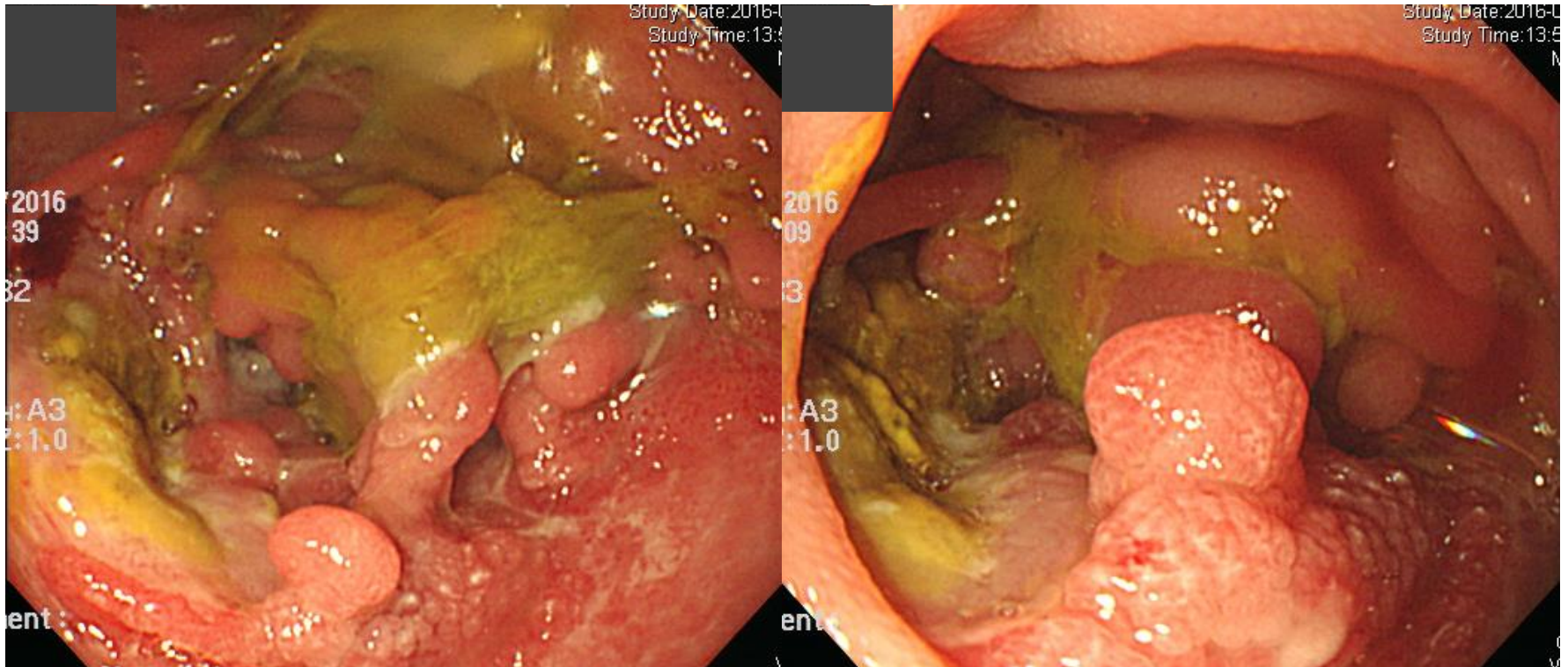


# Q63-4a. M/88. 체중감소

- PMHx: none
- CBC: 8040-10.0-216k
- Serum albumin: 3.7 g/dl (3.5-5.2)
- Out side EGD (-)
- Outside APCT : Focal concentric wall thickening with partial obstruction of jejunum



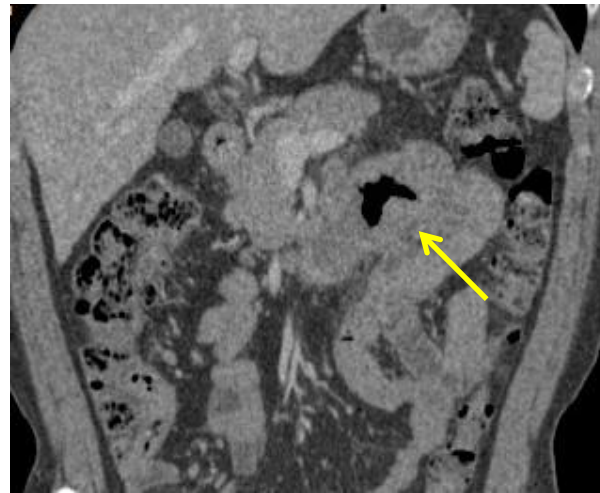
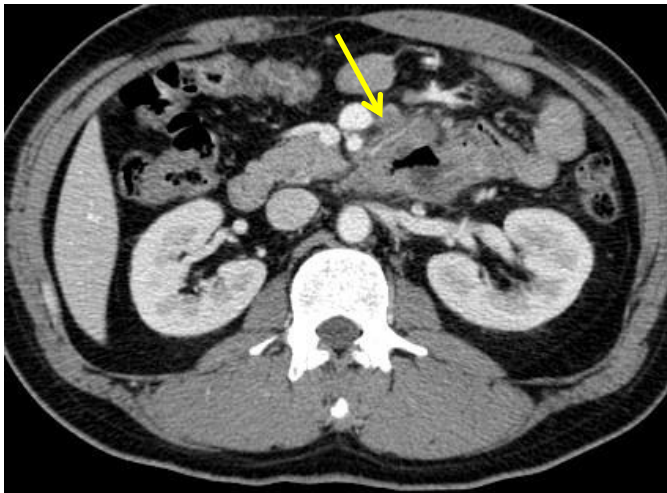
# Q63-4b. 소장경입니다. 소견과 진단은?



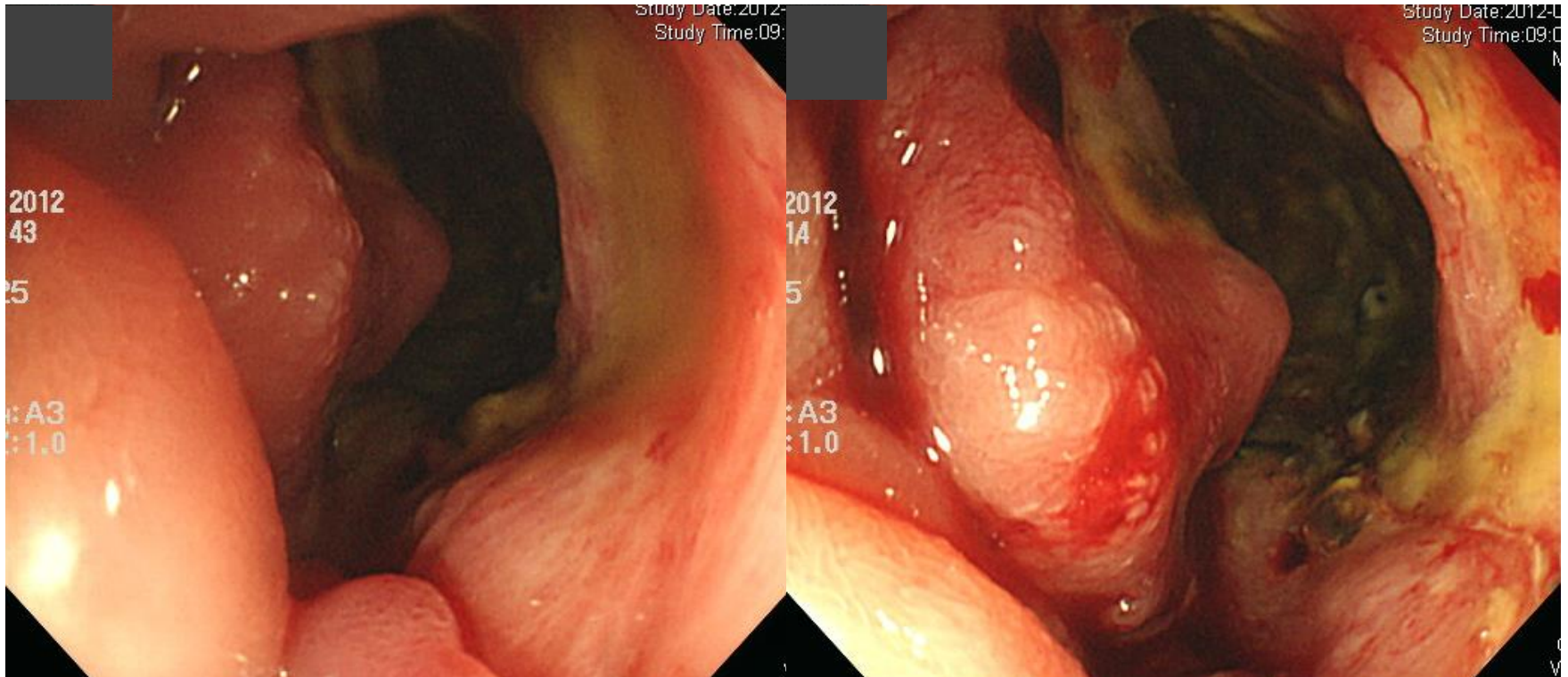


# Q63-5a. M/40. 체중 감소


- PMHx: none
- CBC: 6150-8.9-409k
- Tumor marker : CEA 0.74 ng/ml (0-5), CA 19-9 **78.95** U/ml (0-37)
- Out side examination: EGD (-), Colonoscopy (-)
- APCT : Duodenojejunal junction 부위에 약 5.7 cm 크기 irregular-shaped heterogeneous low-density mass



# Q63-5b. Push enteroscopy입니다. 소견과 진단은?







Acting 선생님은 PDF로 되어있는 문제를 모두에게 전달해 주세요.  
각자 소견과 진단(first impression 하나만)을 A4 용지에 작성하여  
다음 주 월요일 오후까지 acting 선생님께 전달해 주세요.  
Acting 선생님은 목요일 집담회때 발표해 주세요.