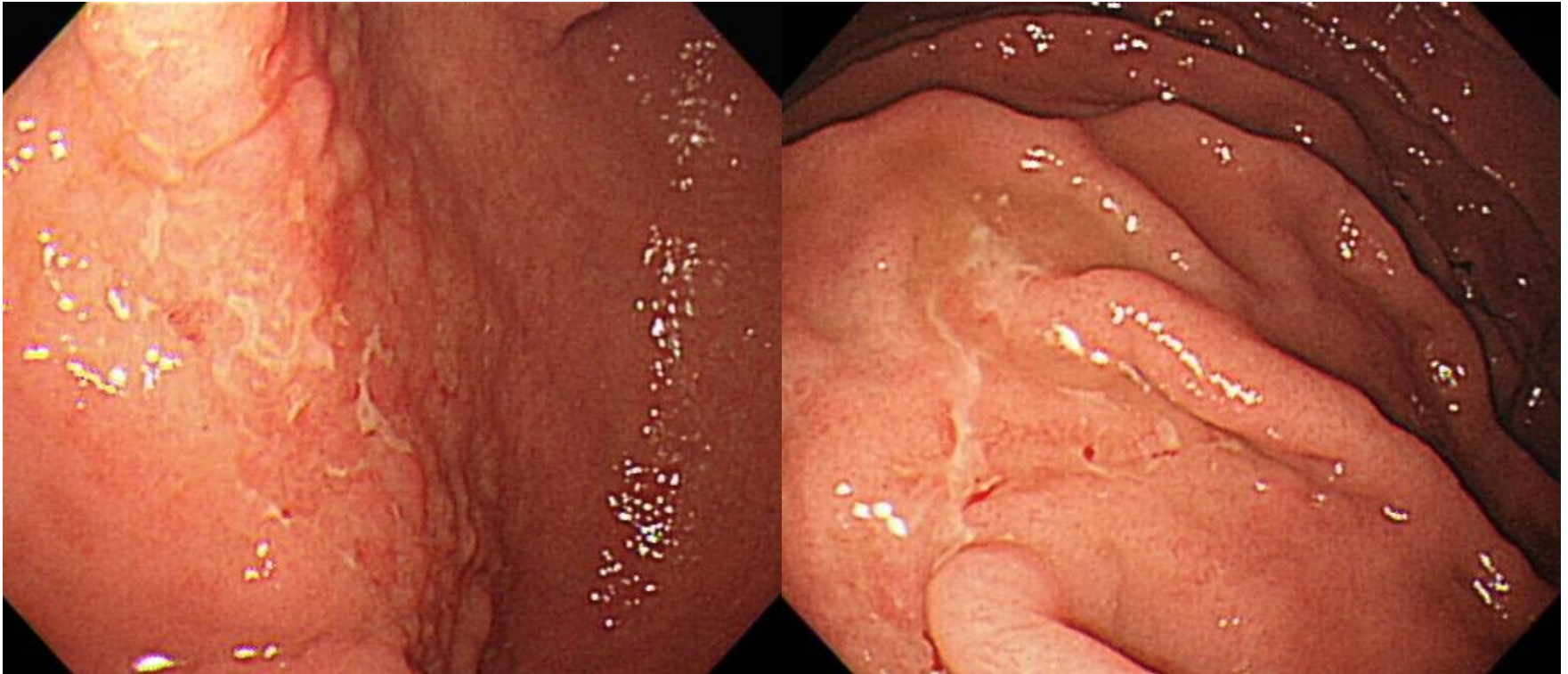


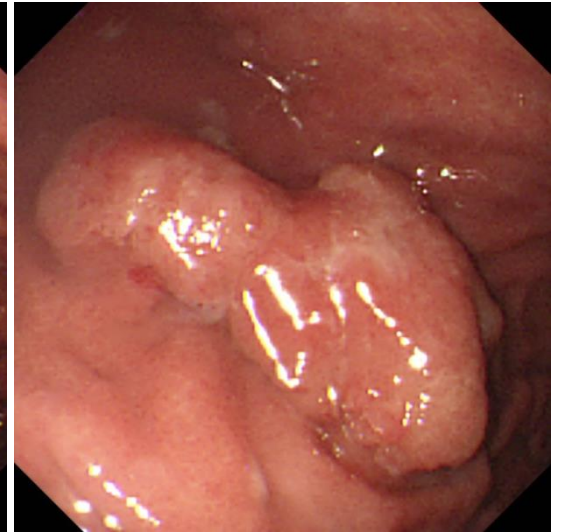
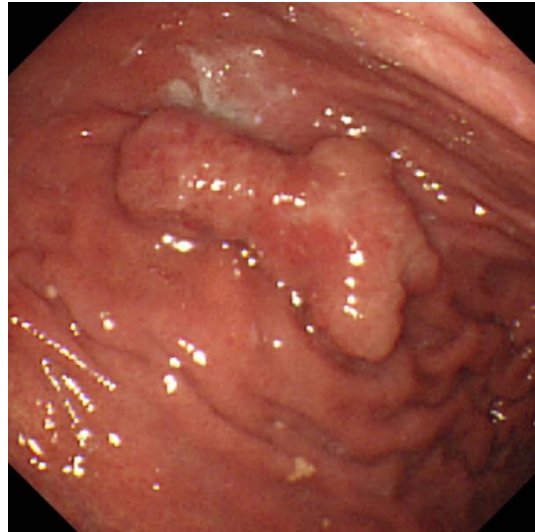
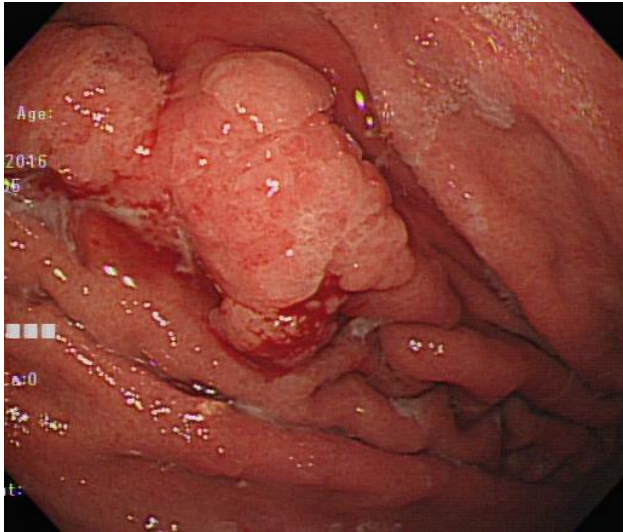
# SMC 내시경 퀴즈 71회

성균관대학교 의과대학 내과 이준행

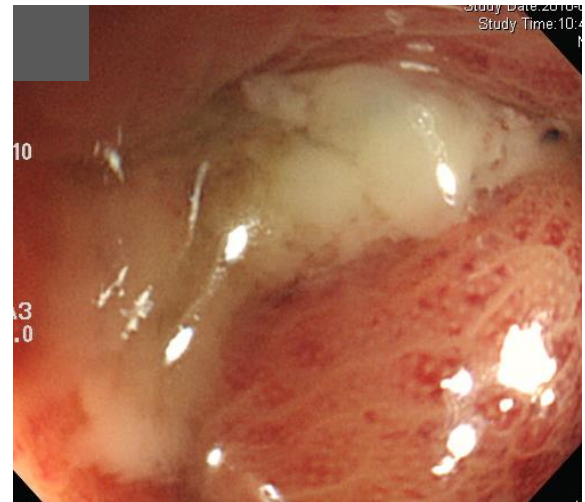
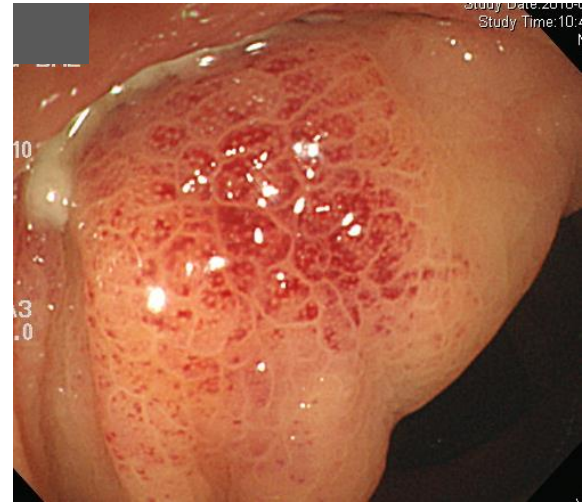
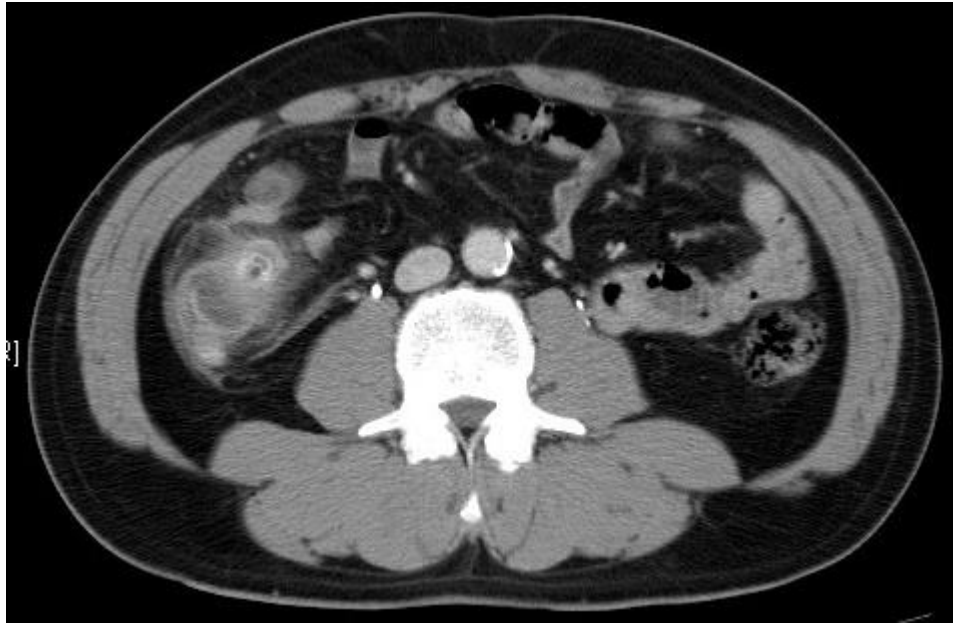
**Q71-1. 위각 전벽과 위체상부 대만입니다.  
소견과 진단은?**



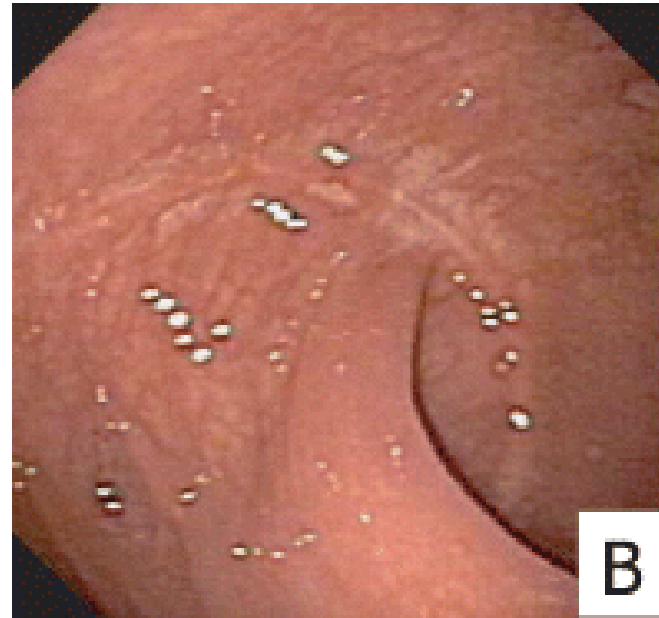
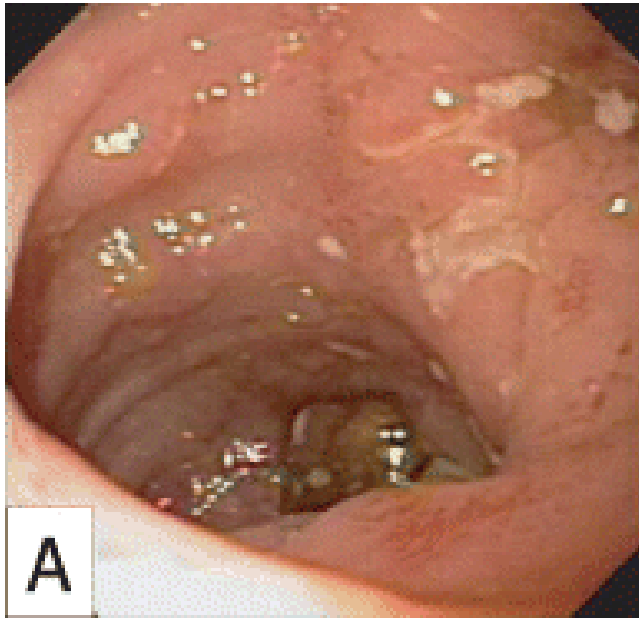
# Q71-2. 소견과 진단은?



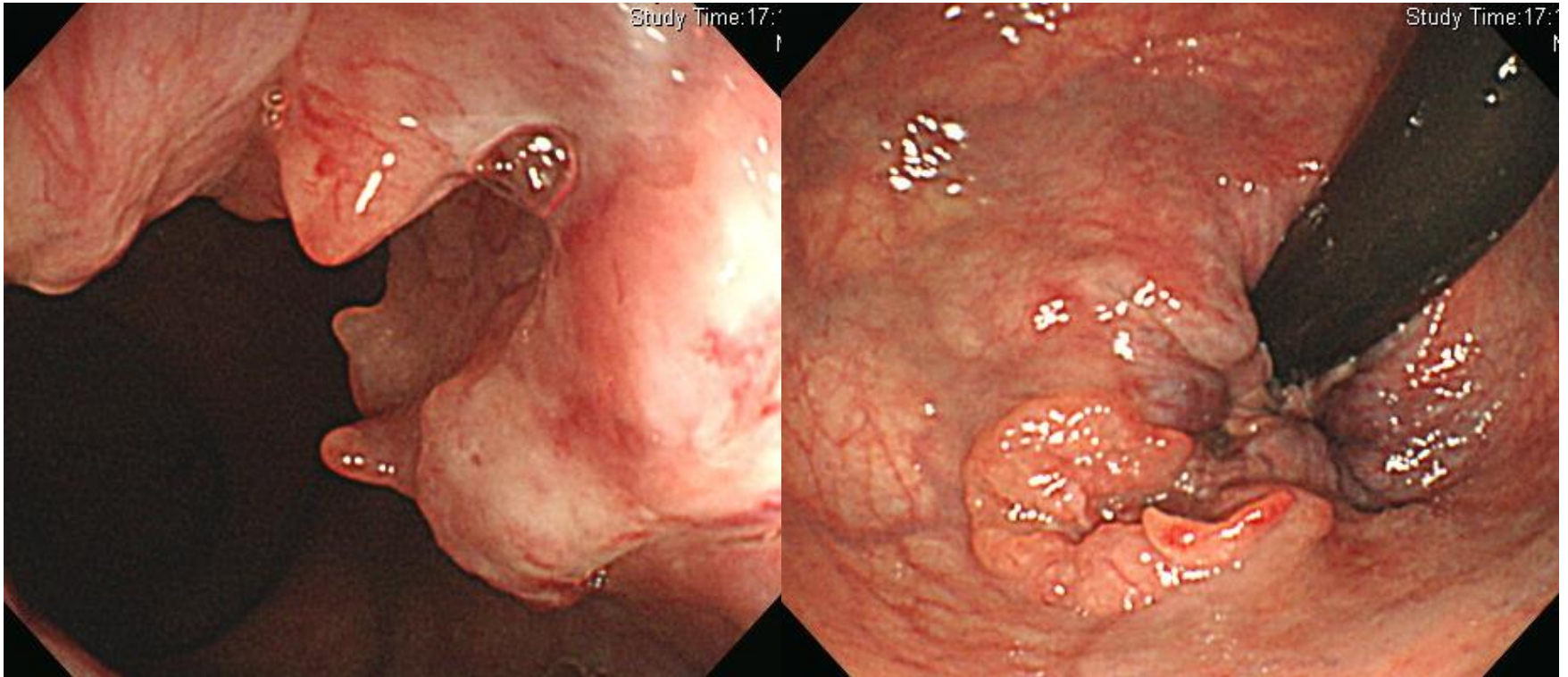
# Q71-3. 급성 복통. 소견과 진단은?




**Q71-4. Ileal Pouch-Anal Anastomosis 상  
태입니다. Ibuprofen 사용 중입니다. Pouch  
의 내시경입니다. 소견과 진단은?**



# Q71-5. 소견과 진단은?





Acting 선생님은 PDF로 되어있는 문제를 모두에게 전달해 주세요.  
각자 소견과 진단(first impression 하나만)을 A4 용지에 작성하여  
다음 주 월요일 오후까지 acting 선생님께 전달해 주세요.  
Acting 선생님은 목요일 집담회때 발표해 주세요.