

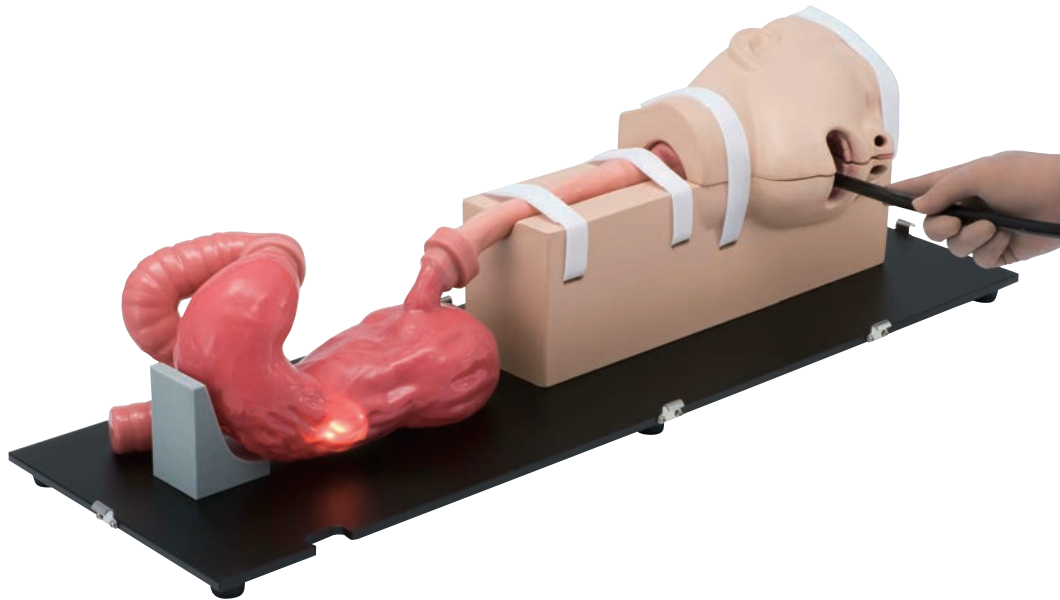
EGD (EsophagoGastroDuodenoscopy) Simulator

■ Outline

This product is a simulator in which an endoscope can be inserted into the upper gastrointestinal tract to perform examination.

Both transoral and transnasal insertion are available, and as an accessory, recreation of an ulcer and an observational polyp is included.

As a separately sold option, a polyp can be attached to practice polyp resection and control of bleeding from it.



■ Features

- Specialized silicone rubber is used as the material, and inserting the endoscope feels like inserting it into an actual human body. The color inside is also close to that of the human body.
- Since the oral and nasal cavities have been reproduced, both transoral and transnasal insertion can be practiced.
- For the transnasal insertion, the difficulty setting of insertion can be changed by placing the nasal septum pieces to deviate to the right or the left side. The insertion technique and visibility can be changed.
- Practicing endoscopic examination of the esophagus, stomach, and duodenum is possible. It is also possible to practice cannulation of the papilla during endoscopic retrograde cholangiopancreatography (ERCP).
- Gastric ulcers and early gastric cancer can be observed in the stomach. Four types of polyps of Yamada classification types I to IV can also be attached for observation.
- As a separately sold option, a polyp can be attached to practice polyp resection and control of bleeding from it. After resecting it, one can practice the clipping method to stop the bleeding.
- An ulcer is reproduced in the duodenum.

Components

Stomach	1
Half head	1
Main head	1
Hypopharynx piece	1
Esophagus piece	1
Duodenum piece	1
Nasal septum (deviated to the left)	1
Nasal septum (deviated to the right)	1
Conduction cable for simulated polyps (for polypectomy)	1
Stand	1
Observational polyp: Yamada classification types I to IV	1set
Simulated polyp fixture	1
Hard case (for the head side)	1
Hard case (for the body side)	1

Spare

LM-107E	Conduction cable for simulated polyps (for polypectomy)	1
---------	---	---

Specifications

Dimensions	Approx.27(L) × 80(W) × 29(H)cm
Weight	Approx.8 kg

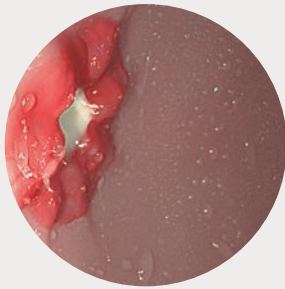


The face portion can be opened at the midline to understand the anatomical structure of the nasal and oral cavities and the larynx.



The dedicated box for packaging can be divided into 2 parts, and it can be used to only cover the stomach side.

■ Name of Each Part



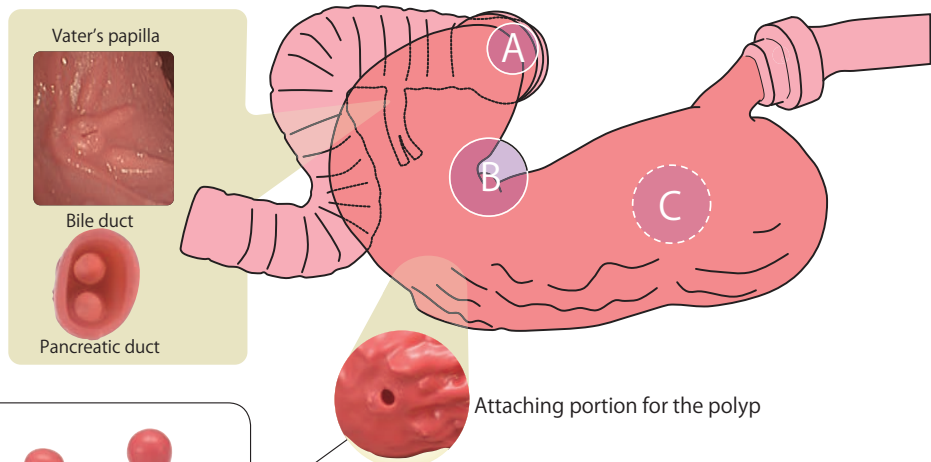
(A)-Duodenal ulcer



(B)-Gastric ulcer



(C)-Early gastric cancer



Observational polyp
Yamada classification types I to IV

Options LM-103A

Simulated Polyp (for polypectomy) 5count

- Polyps can be resected with an electrical scalpel, and it will bleed.
- Techniques to stop bleeding using a clipping method are possible.
- The type of the polyp is Yamada classification type IV.

*The disposable return electrode is not included.

*Always store the simulated polyp (for polypectomy) in the refrigerator (2°C to 10°C, do not freeze).



Keep refrigerated.

