

Gastrointestinal Videoscope

GIF-EZ1500

Full Focus and High Magnification for Observational Excellence

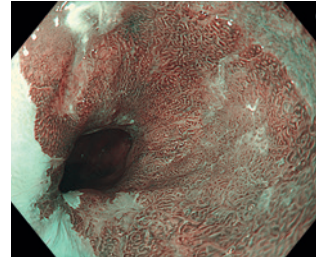




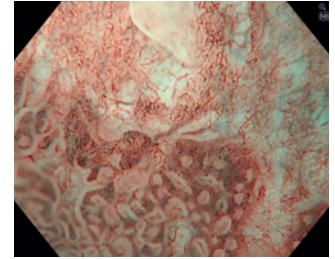
Full Focus and High Magnification for Observational Excellence

EDOF Technology

Our unique Extended Depth of Field (EDOF) technology combines images captured in near view with those taken in far view to generate an image with a wider depth of field that gives you greater clarity and richer detail throughout the image area, assuring superior observation with continuous wide focusing.



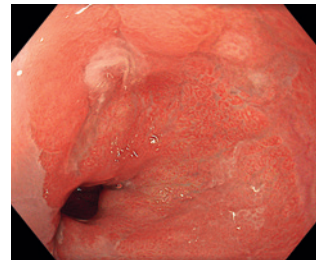
NBI Normal Focus



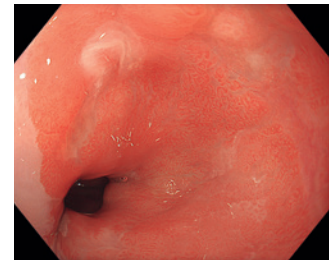
NBI Near Focus

Full Focus

Thanks to EDOF technology, the GIF-EZ1500 can approach as close as 3 mm to the subject in normal focus mode, providing a clear, sharp view that may reduce the need to adjust the focus in routine use.



TXI



White Light

High Magnification with the Ease of Dual Focus

The GIF-EZ1500 offers high magnification* when the Near Focus mode is engaged via a simple scope switch, supporting better observation of details. The combination of high magnification and wide depth of field allows for clearer, more detailed imaging throughout the field of view, even from a tangential direction and regardless of whether the subject is moving or not. In combination with proven NBI technology, the GIF-EZ1500's advanced optics is designed to assist accurate, high-confidence optical diagnosis.

* Maximum magnification of 85x (with OEV262H) and 100x (with OEV321UH).

Other Features

- Compatible with TXI, RDI and NBI when connected to CV-1500
- ErgoGrip
- WaterJet
- Waterproof one-touch connector

Specifications				
Optical System	Field of view	Normal focus mode: 140° Near focus mode: 140°	Bending Section Angulation range Up 210° / Down 90° / Right 100° / Left 100°	
	Direction of view	Forward viewing		
	Depth of field	Normal focus mode: 3-100mm Near focus mode: 1.5-5.5mm		
Insertion Section	Distal end outer diameter	ø 9.9 mm	Total Length 1350 mm	
	Distal end enlarged	Light-guide lens		
		Objective lens		
		Auxiliary water channel		
		Instrument channel outlet		
Insertion tube outer diameter	ø 9.6 mm	Compatible System Video system center OLYMPUS CV-1500		
Working length	1030 mm			
Instrument Channel	Channel inner diameter		ø 2.8 mm	
	Minimum visible distance* ¹		3 mm (Normal focus mode)	
Auxiliary Water Channel	Direction from which endotherapy accessories enter and exit the endoscopic image			
	Direction from which water jet appears in the endoscopic image			

*¹ Distance from the distal end of the endoscope.



GASTROINTESTINAL VIDEOSCOPE OLYMPUS GIF-EZ1500

Specifications, design, and accessories are subject to change without any notice or obligation on the part of the manufacturer.

