

**OLYMPUS**<sup>®</sup>

Your Vision, Our Future

**EVIS LUCERA  
ELITE**

EVIS LUCERA ELITE VIDEOCOLONOSCOPE

## **PCF-H290TL/I**

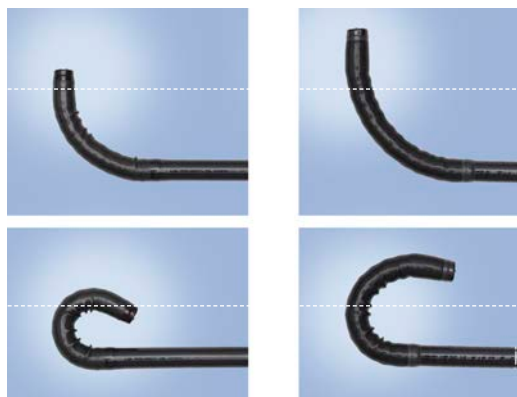
High-definition colonoscope facilitating endoscopic treatment  
through excellent maneuverability



## Main Features

### Short bending for better access to lesions

With a shorter bending section, the PCF-H290TL/I provides better handling in the intestine. Combined with the 210° up angulation, the scope offers easier lesion approachability.

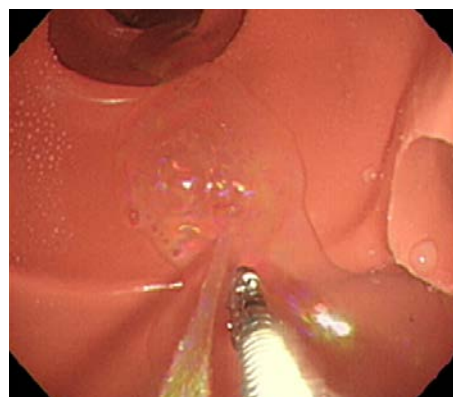


PCF-H290TL/I

PCF-Q260JL/I

### Appropriate channel layout

The layout allows for smooth operation of both the water-jet function and any treatment such as stopping bleeding.



### HDTV and NBI

With its HDTV image quality and brighter NBI, the PCF-H290TL/I contributes to higher treatment accuracy. High confidence optical diagnosis facilitates appropriate treatment decisions and accurate delineation of lesions.



White Light

### Improved insertability

The PCF-H290TL/I incorporates unique proprietary OLYMPUS technologies, realizing easier scope insertion with minimized patient discomfort.



EVIS LUCERA ELITE VIDEOSCOLONOSCOPE  
OLYMPUS PCF-H290TL/I

## Specifications

Optical System	Field of view (Maximum diagonal angle)	140°
	Direction of view	0°(Forward viewing)
	Depth of field	5-100 mm
Insertion Section	Distal end outer diameter	9.8 mm
	Distal end enlarged	
	Insertion tube outer diameter	10.5 mm
	Working length	L: 1680 mm, I: 1330 mm
Instrument Channel	Channel inner diameter	3.2 mm

Instrument Channel	Minimum visible distance	4 mm from the distal end
	Direction from which endotherapy accessories enter and exit the endoscopic image	
Water Jet	Direction of water jet in field of view	
Bending Section	Angulation range	Up 210°/Down 180°/ Right 160°/Left 160°
Total Length	L: 2005 mm, I: 1655 mm	
Compatible EVIS LUCERA System	Video System Center OLYMPUS CV-290 Xenon Light Source OLYMPUS CLV-290SL, CLV-290	

Specifications, design and accessories are subject to change without any notice or obligation on the part of the manufacturer.